



# SECURITY RESIDENTIAL DOOR RANGE

Where style welcomes you in, every door opens to safety and elegance.  
Transform your home with doors built to protect and impress.

APPROVED BY **THE BEAST**  
HALL





**WELCOME  
HOME TO  
LATHAM'S**



# WHY CHOOSE LATHAM'S

Trusted by thousands to deliver competitively priced steel doors for residential, commercial and industrial sectors.

We specialise in competitively priced, industry-leading security doors and are renowned for our extensive range of readily available stock.

With over 15 years of development, we have grown and evolved to become a trusted supplier of high-quality residential doors; combining innovation, reliability and exceptional value.



Customer first approach with a 5\* rating



Industry leading security locking system



5 year anti-bow warranty  
Terms and conditions apply



100,000 sq ft facilities with on-site showroom



Over 10,000 steel doors held in stock



Nationwide delivery fleet of 6 vehicles



5 year Anti-Burglar Guarantee



Custom Made to Measure specialist team



Knowledgeable sales and customer service advisors



Manufactured from galvanised steel



## TABLE OF CONTENTS

A very warm welcome from LATHAM'S. Expert craftsmen dedicated to delivering the very best doors across the UK.

**05** Eddie Hall vs a LATHAM'S front door

**07** Residential Doors

**19** Colours & Glazing

**27** Hardware Range

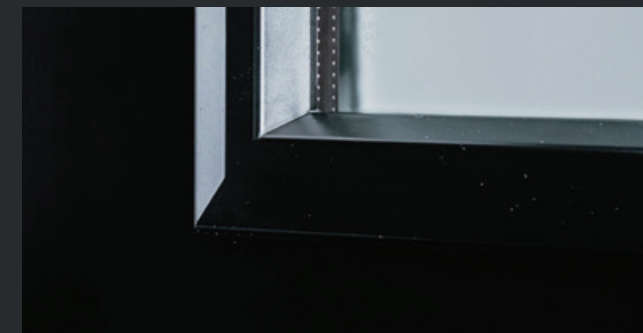
**33** Security Standards

**37** Construction Standards

**41** U-Values: Warmth from Within



**WELCOME  
TO PEACE  
OF MIND**



## EDDIE HALL VS A LATHAM'S FRONT DOOR

When The World's Strongest Man Eddie Hall hit our steel door, it held its ground. Even with a hammer and his trademark world-class power - LATHAM'S stood tall.



APPROVED BY

**EDDIE  
THE BEAST™  
HALL**

**WHEN PAS 24 TESTING  
WASN'T ENOUGH, WE TOOK IT  
ONE STEP FURTHER. BUT FOR  
THE WORLD'S STRONGEST MAN,  
IT WAS A STEP TOO FAR.**

**FINALLY, SOMETHING  
HAS STOOD IN THE WAY  
OF EDDIE HALL.**





A close-up, low-angle shot of a dark, possibly black, door. The door has a classic, multi-paned design with vertical lines. On the right side, there is a prominent handle and lock mechanism, featuring a circular top section and a rectangular lower section. The lighting is dramatic, highlighting the textures and contours of the door and hardware against a dark background.

# OUR RESIDENTIAL DOORS

Precision-engineered and made to measure, each door delivers slim sightlines, smooth operation and long-lasting performance for modern and traditional homes alike.

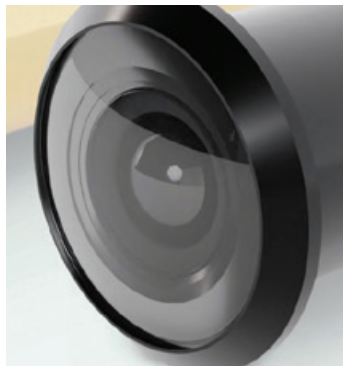
## RESILIENT STYLE IN STEEL

Experience contemporary elegance and resilience with our steel door range. These doors offer lasting beauty and exceptional security.

**Our steel doors blend modern style with exceptional durability. Crafted from galvanised steel, bonded to a perimeter sub-frame of LVL and UPVC, they ensure the highest thermal performance. Accredited to meet standards, they offer style and reliability for your home.**

Security is paramount, with our doors meeting Secured by Design (PAS 24:2022) accreditation. Choose from flush, tradition 6 panel and cottage designs in a range of contemporary colours and optional colour matched frames.

Our innovative triple-glazed units offer improved thermal performance, water ingress protection, and sound insulation. Manufactured sustainably, our doors feature a CFC and HCFC-free rigid polyurethane foam core. This technology ensures robustness, optimal corrosion and UV resistance, thus guaranteeing low maintenance and enduring beauty.





#### **Galvanised Steel**

Colorcoat Prisma® textured finish with revolutionary 3-layer coating technology.

#### **L/M/Q Approved**

Already meets future building regulations and requirements.

#### **A-Rated Energy**

Achieved as a 60mm door thickness through clever design & a unique triple-glazed cassette system.

#### **Made Sustainably**

Designed and manufactured sustainably and responsibly in the UK.





# CONTEMPORARY

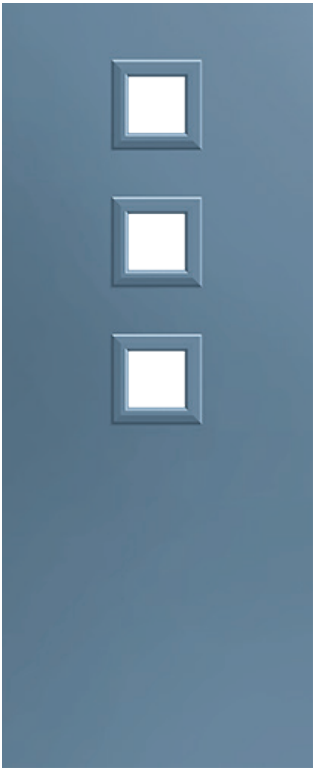
Stunning high security and modern front doors built to impress and protect. 10 styles, 15 colours.



MOD1



MOD2



MOD3

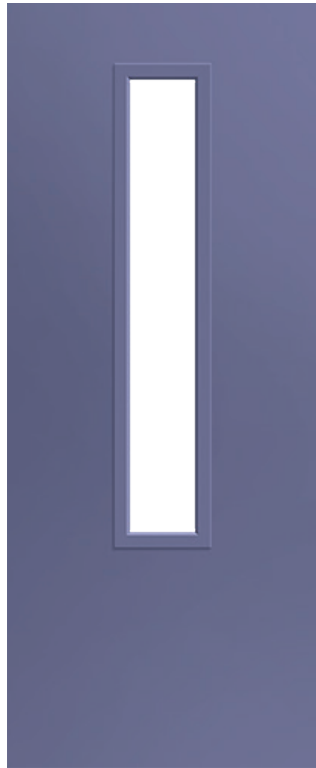


MOD4



MOD5

# CONTEMPORARY CONTINUED



MOD6



MOD7



MOD8



MOD9

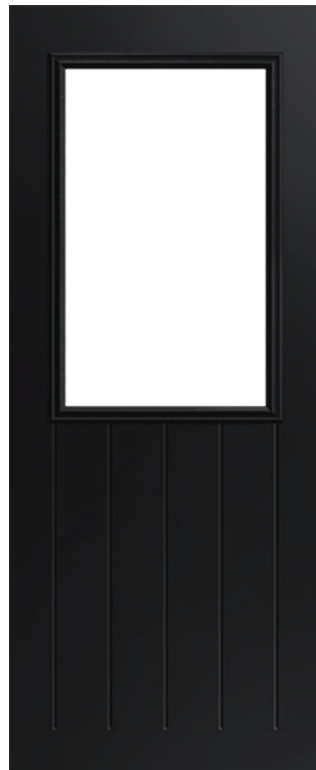


MODE10



## COTTAGE

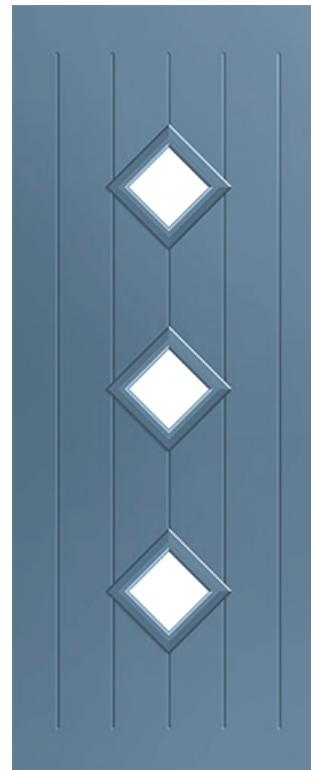
Our cottage style front doors are available with a choice of colours, sizes and glazing options.



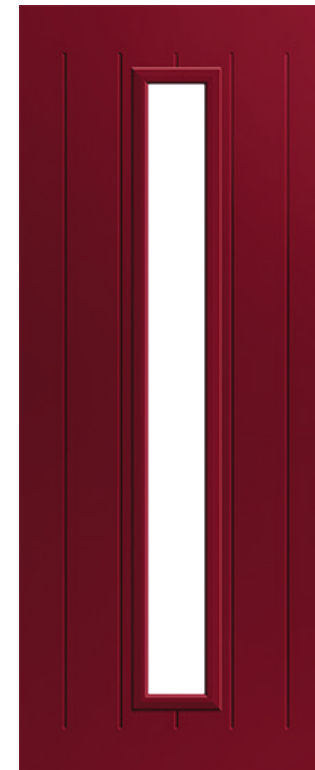
RUS1



RUS2



RUS3



RUS4



RUS5



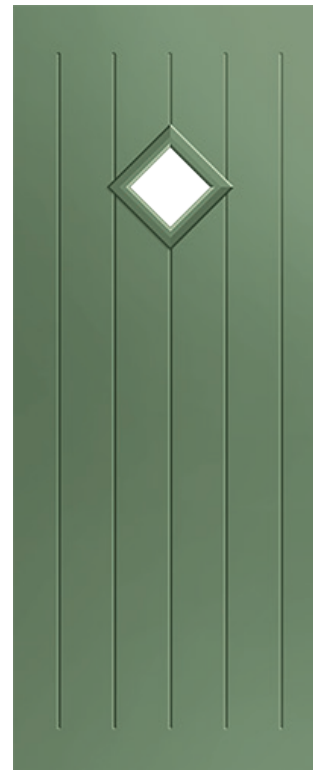
RUS6



RUS7



RUS8



RUS9



RUS10

## TRADITIONAL

Traditional 6 panel design, with modern security. Our front doors are available in a wide range of sizes, colours and styles.



TRAD1



TRAD2



TRAD3



TRAD4



TRAD5





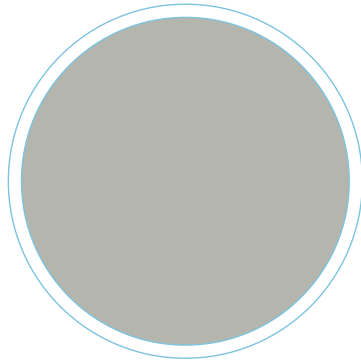


# OUR COLOURS & GLAZING

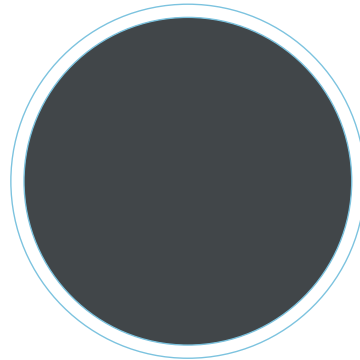
From clear or textured glass to a range of contemporary colours in a durable powdercoated finish, each steel door is crafted for lasting performance and visual appeal.

## COLOUR RANGE

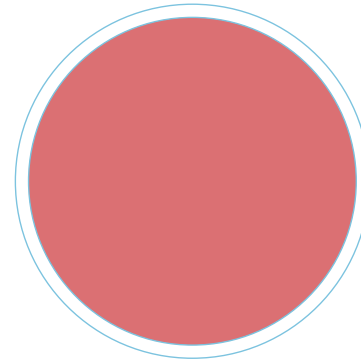
Explore our wide selection of colours to perfectly complement your home. From classic neutrals to vibrant shades, each steel door is finished in durable, fade-resistant coatings for long-lasting beauty.



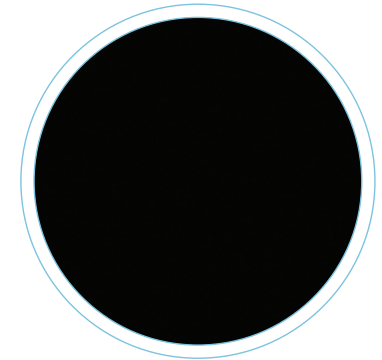
AGATE GREY



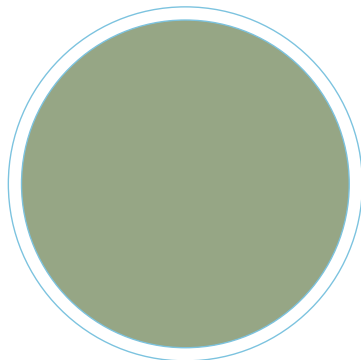
ANTHRACITE GREY



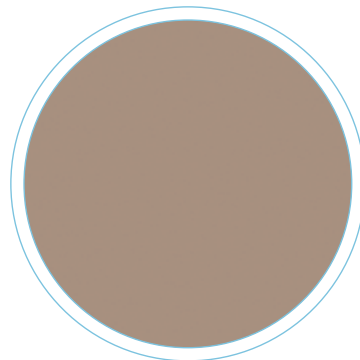
ANTIQUÉ PINK



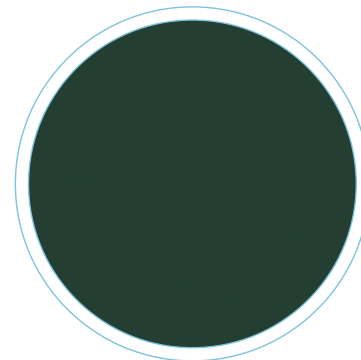
JET BLACK



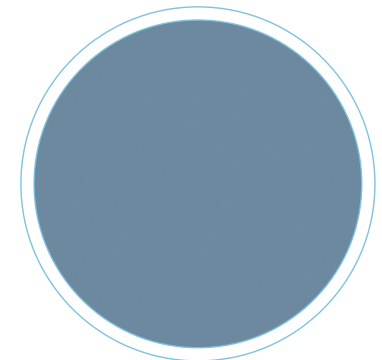
CHATWELL GREEN



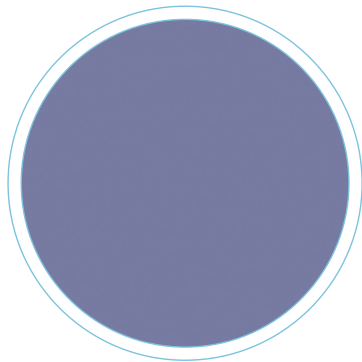
DESERT SAND



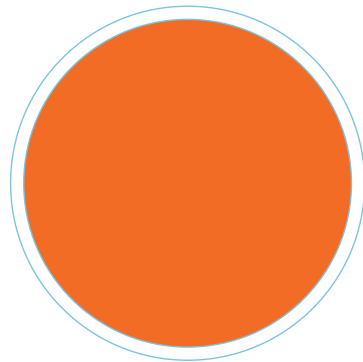
FIR GREEN



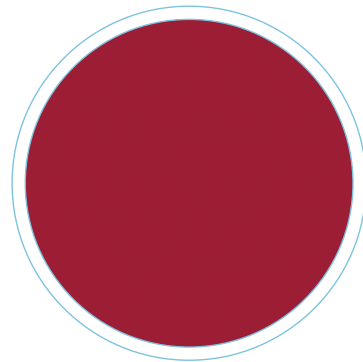
LARKSPUR BLUE



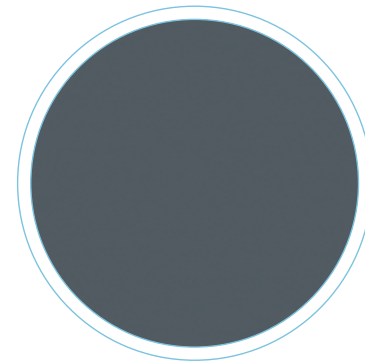
PEARL BLACKBERRY



PURE ORANGE



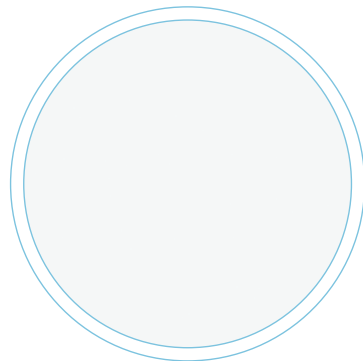
RUBY RED



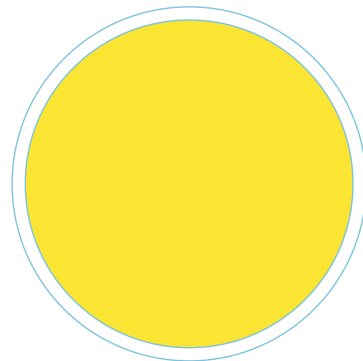
SLATE GREY



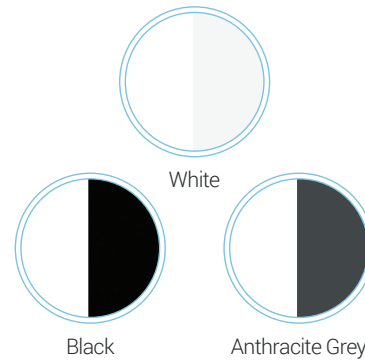
STEEL BLUE



WHITE



ZINC YELLOW



Black

White

Anthracite Grey

FRAME RANGE COLOURS

Timeless white on the inside.  
Choice of black or anthracite grey on the outside

## TOP AND SIDE LIGHTS

For improved lighting coverage and enhanced functionality, our units are equipped with illumination positioned to reach more than one direction.

### Toplights

Horizontal glazed panels fitted above doors.  
They increase entrance height and maximize natural light

### Sidelights

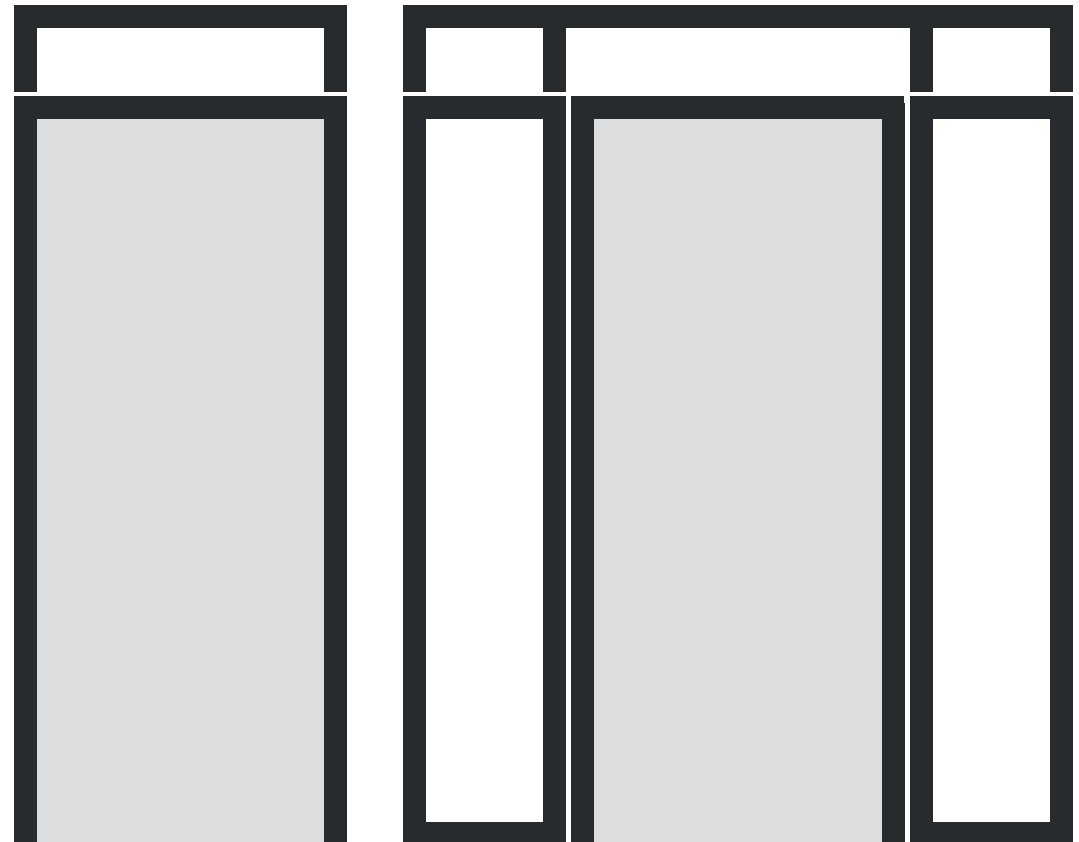
Vertical glazed panels fitted alongside doors.  
They expand entrance width and maximize natural light

### Seamless match

Constructed from the exact same reinforced PVC as the door itself for a flawless look and maximum security

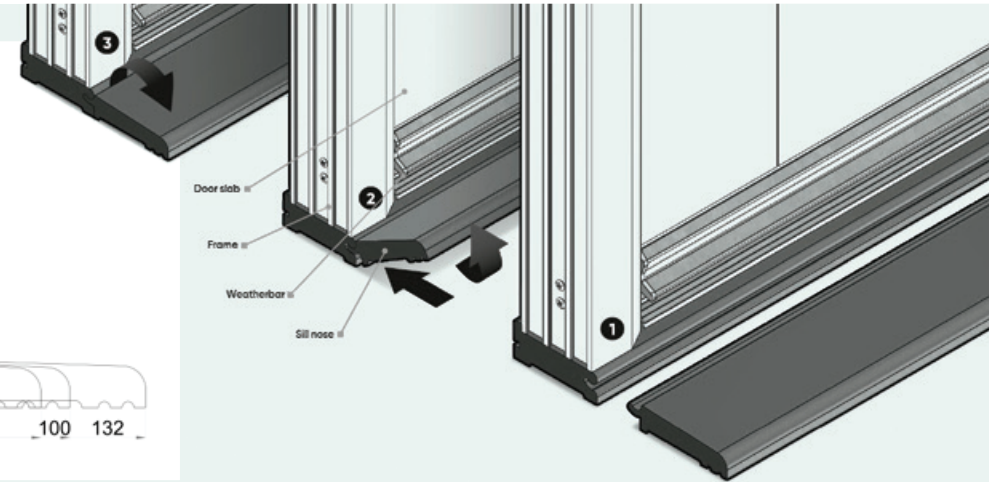
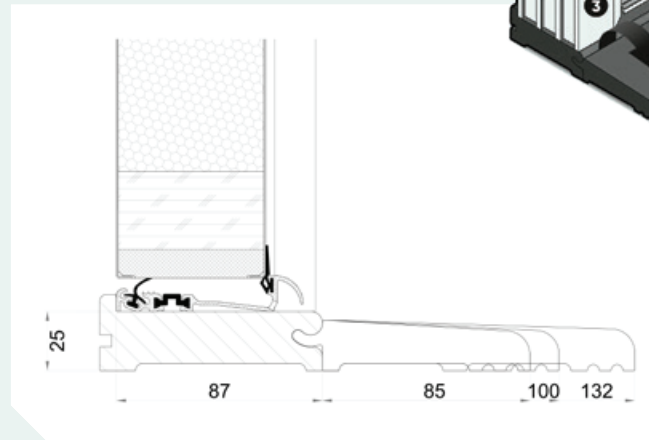
### Ultimate efficiency

Fitted with high-performance triple glazing, delivering a highly energy-efficient U-value of under 1.0



## 2-PART CILL

Streamline your installation and eliminate costly replacements with our 2-part synthetic door cill. Designed for easier transport, it is the perfect solution to minimise on-site damage.



### Easier handling

The 2-part design offers distinct advantages for both storage and transport before it even reaches the site

### Flexible installation

Fit the nose during the initial build or at the very end of the process to drastically reduce the risk of accidental damage

### Versatile sizing

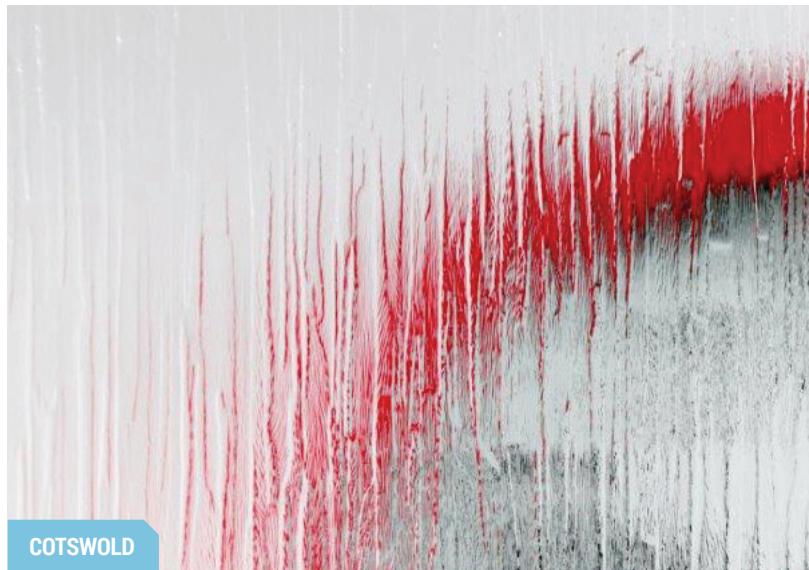
Choose from 3 different nose sizes; all supplied in a sleek black finish, to perfectly accommodate varying construction details

### Cost-effective repairs

Unlike traditional one-piece cills, any damage to the cill simply means replacing the affected part, rather than removing the entire frame

## GLAZING RANGE

Choose from a variety of glazing options to enhance style and light. From clear to textured glass, each panel is designed for elegance, privacy and lasting performance.





**Warmth and peace of mind for your home**

Experience the perfect blend of warmth and protection with our advanced glazing. Featuring ultra-efficient triple glazing, our glass delivers an exceptional U-value of under 1.0 to keep your space comfortable and energy bills low.

Coupled with fully toughened safety glass, it provides uncompromising security and total peace of mind for your home.



# OUR HARDWARE RANGE

From sleek handles to durable locks and hinges, every piece is designed for style, security and long-lasting performance.

## ENHANCING YOUR SECURITY

Choose from a wide selection of beautiful, stylish hardware and accessories that will make your new door stand out.

**Introducing our comprehensive range of quality hardware and accessories designed to enhance the functionality, security, and aesthetic appeal of your doors. Choose from a selection of door knockers, lever handles, letterplates, security chains, and numerals, all manufactured from high-grade 304 stainless steel for ultimate corrosion resistance.**

Available in Polished Stainless and Matt Black, our hardware complements any door style.

Experience seamless operation and durability with our adjustable hinges, while our award-winning letterplates offer both elegance and security. Elevate your property's security with our Kinetica Kitemarked high-security 3-Star Cylinder, approved by Secured by Design.





### Stainless Steel Finishes

304 Stainless Steel door hardware: Corrosion-resistant and stylish finishes for enhanced door appeal.

Elevate your door's functionality and style with our door knockers, lever handles, letterplates, security chains, and numerals, all expertly crafted from 304 stainless steel.

This high grade material ensures ultimate corrosion resistance, while our selection of stainless finishes perfectly complement your door's colour:



### Contemporary Bar Handles

Our Contemporary Bar Handles. Crafted from durable Austenitic stainless steel. Our door bar handles are available in both inline and offset styles and come in four sizes, ranging from 400mm to 1800mm, offering a customised solution for your entrance.

Available in brushed or black stainless finishes, and crafted from robust austenitic stainless steel, our bar handles feature a stylish and contemporary design. They're securely fixed with matching internal handle for lasting quality and modern appeal.

# POLISHED STAINLESS

Bright and reflective, polished chrome adds a crisp, sophisticated touch to any doorway.



LEVER HANDLE



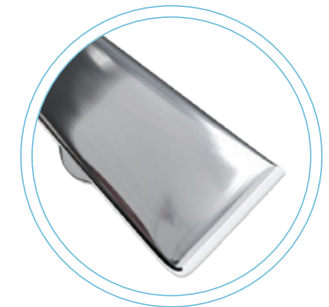
EYE VIEWER



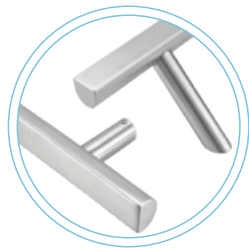
NUMERALS



TRADITIONAL KNOCKER



LETTERPLATE



BAR HANDLES



MODERN KNOCKER



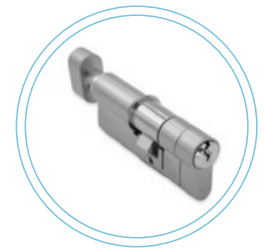
LEVER PAD HANDLE



HERITAGE PULL



SECURITY CHAIN



3 STAR CYLINDER

## MATT BLACK

Modern and striking, matt black provides a clean, non-reflective surface that hides fingerprints.



LEVER HANDLE



EYE VIEWER



NUMERALS



TRADITIONAL KNOCKER



LETTERPLATE



BAR HANDLES



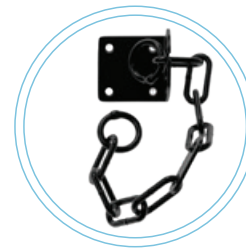
MODERN KNOCKER



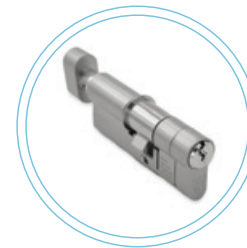
LEVER PAD HANDLE



HERITAGE PULL



SECURITY CHAIN



3 STAR CYLINDER



# OUR SECURITY STANDARDS

Blending striking design, exceptional durability and certified security, our carbon-neutral door solutions deliver protection that goes far beyond the ordinary.

**Secured by Design**

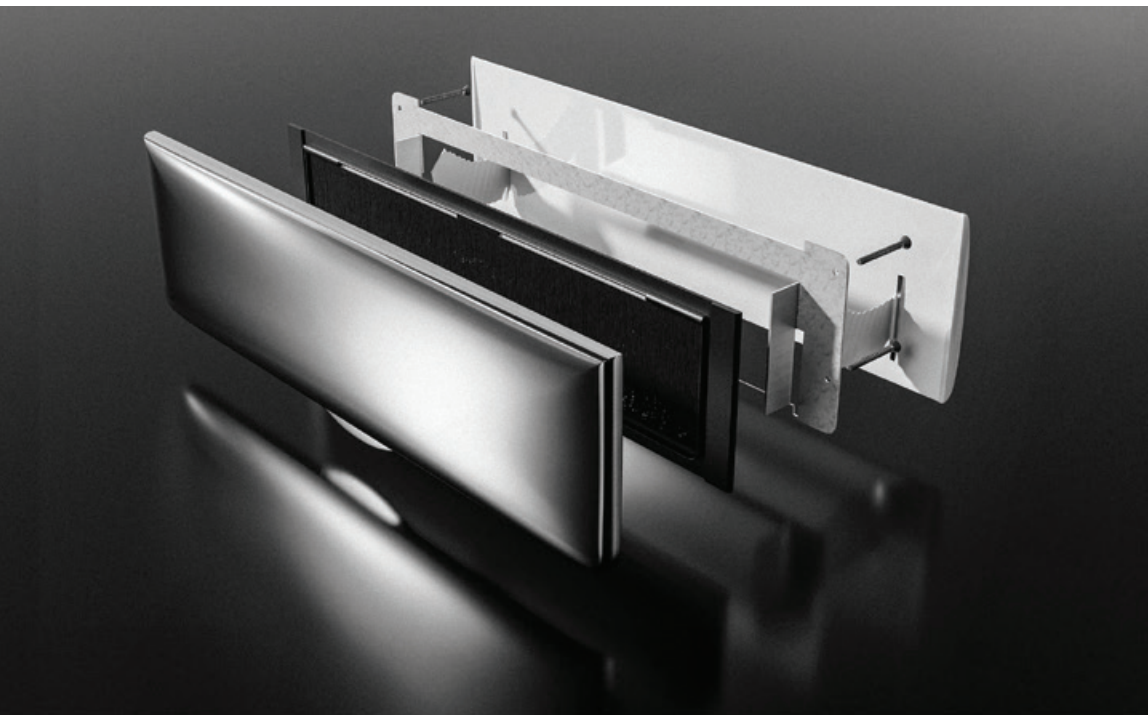


**Official Police Security Initiative**

## SECURED BY DESIGN DOORSETS

Offering enhanced building security with a high-security multipoint locking system, tested against drilling, picking, and crowbar assaults.

**Our doors adhere to the rigorous standards of Secured by Design and feature a high-security multipoint locking system, providing superior protection. Additionally, our Kinetica 3-star cylinders (accredited by Secured by Design) offers advanced security features.**



Our doors are equipped with a TS008 secure letterplate with restricted opening and a high-security multipoint locking system that meets the rigorous standards of PAS 24 and is tested in accordance with BS EN ISO 1303 Building Hardware – Cylinders for Locks.

In addition to secure locking systems, all glazing options come standard with laminated glass and a security glazing cassette.



### Reliable Security you can trust

When it comes to security, our door ranges are truly exceptional. Each door features a high-security stainless steel multipoint locking system that meets PAS 23/24 standards and is tested in accordance with BS EN ISO 1303 Building Hardware - Cylinders for Locks. Our doors are also fitted with the UAP Kinetica Kitemarked high-security 3 Star Cylinder, approved by Secured by

Design and designed to withstand attack. For added strength and protection, every door includes a steel-reinforced frame and laminated safety glass manufactured to BS EN 12600 standards, while an optional split spindle mechanism allows for customisable locking configurations.



LATHAM'S proudly adheres to the principles of Secured by Design, offering doors that meet the highest security standards. Our products undergo rigorous testing and certification by independent third-party bodies accredited by the United Kingdom Accreditation Service (UKAS).



The background of the image is a dark, almost black, photograph of dense green foliage, possibly a garden or forest. The leaves are out of focus, creating a bokeh effect. The text is overlaid on this background.

# OUR CONSTRUCTION STANDARDS

Designed to meet rigorous industry standards, each door is carefully fabricated to ensure structural integrity, safety, and reliable performance in both commercial and industrial environments.

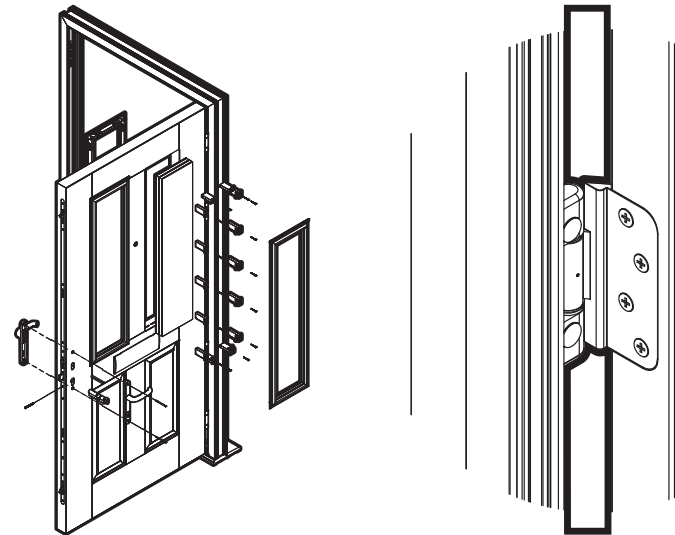
## TAILORED SERVICES FOR EVERY ENTRANCE

To ensure your door is installed properly, in the way you prefer, we offer a range of installation services.

**We cater to both new build and refurbishment projects. Our resources, flexibility, and well-organised structure uniquely position us to meet the demands of major national house builders, developers, as well as local authorities and social housing landlords.**



We offer a range of services and support to ensure your door is correctly fitted and serviced. Our team can offer you support through a supply-only service, or take the strain with a service where our team handles every aspect of your door project.





### Supply Only

#### Experience the freedom of our Supply Only service

Our Supply Only service offers you the flexibility to take control and oversee the installation process. Dedicated to supporting our trade installers, you can be confident that our doors come with meticulous fitting instructions, with Latham's on hand to support you in ensuring a smooth and efficient installation experience.

### Supply and Fit

#### Guiding you through the selection of your door, to seamlessly fitting

Our all-encompassing Supply & Fit service guarantees a hassle-free experience for your project. Installation is carried out by authorised installers around the UK with support from Latham's, but can be arranged directly through us. With a team of skilled professionals managing both aspects, we alleviate the usual effort and time associated with the installation process.

*Please see a selection of our authorised installers below:*

#### AP Door Fitting

07342 959097

apdoorfitting01@gmail.com

[instagram.com/apdoorfitting](https://www.instagram.com/apdoorfitting)

#### Creative Windows Ltd.

07792 648446

creativewindowsltd@gmail.com

[www.facebook.com/windowsatcreative](https://www.facebook.com/windowsatcreative)

#### MGC Doors & Security

07517793941

mgc.doors@gmail.com

[www.mgdoors.co.uk](http://www.mgdoors.co.uk)

#### DJB Steel Doors Limited

07976 630873

darrenboswell@yahoo.com

[instagram.com/djb\\_steel\\_security\\_doors\\_](https://www.instagram.com/djb_steel_security_doors_)

For more options,  
please see a full list  
of our installers on  
the Latham's website

#### The Garage Door Centre

02920 694 111

rob@garagedoors-direct.co.uk

[www.garagedoors-direct.co.uk](http://www.garagedoors-direct.co.uk)

## WARMTH FROM WITHIN

Cool in summer, toasty warm in winter - our steel doors use advanced insulation to maintain the perfect temperature and keep your home comfortable year-round.

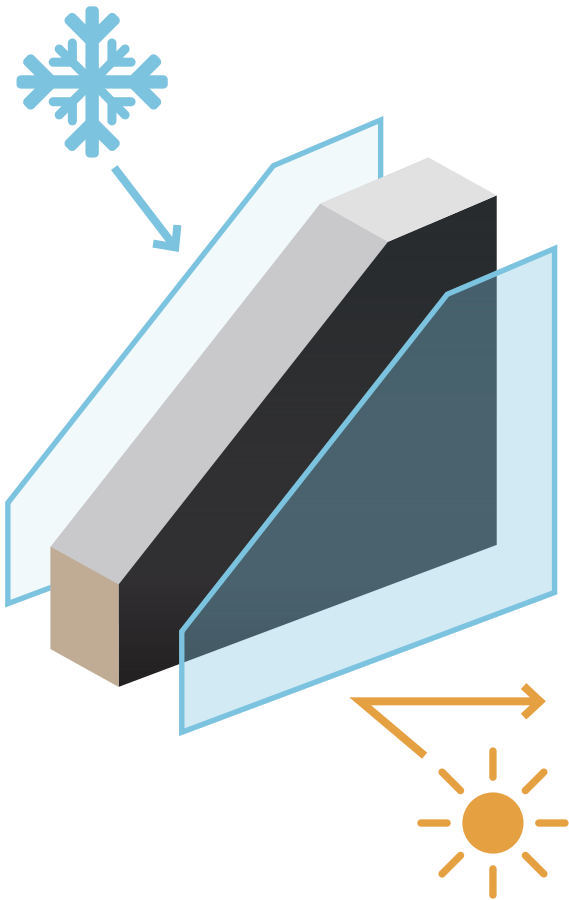
**With an exceptional U-value of up to 0.9, our steel doors are engineered to deliver outstanding thermal efficiency without compromising on strength, security or design.**

Each door is engineered with advanced insulation technology to minimise heat transfer and maximise energy efficiency within the home.

The 60 mm thick door panel is filled with high-performance polyurethane (PU) foam, which acts as both a thermal and acoustic insulator, helping the door achieve an A energy rating.

Designed to retain warmth in winter and reduce heat gain in summer, our steel doors help maintain a comfortable indoor temperature throughout the year. By improving heat retention, they can also contribute to lower energy consumption and reduced heating costs - combining modern architectural style with the performance and efficiency today's homes require.







**LATHAM'S SECURITY DOORSETS LTD**

35-37 Hainge Road | Tividale | Oldbury | West Midlands | B69 2NY

Tel: +44 (0) 1384 220 050 | Email: [sales@lathamssteeldoors.co.uk](mailto:sales@lathamssteeldoors.co.uk)  
[www.lathamssteeldoors.co.uk](http://www.lathamssteeldoors.co.uk)

VAT Number: GB 987 0319 88 | Company Reg No. 07567650

