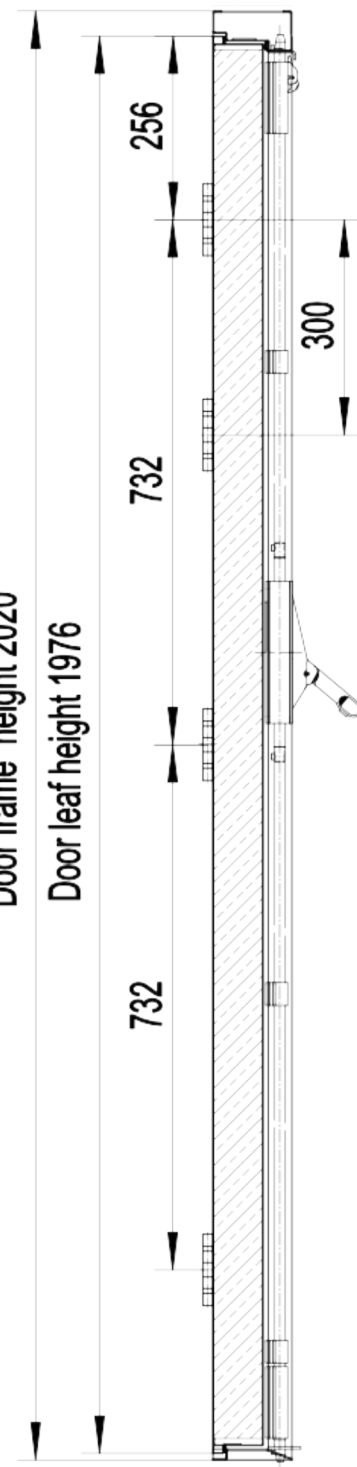


1 ELEVATION
SCALE 1:1

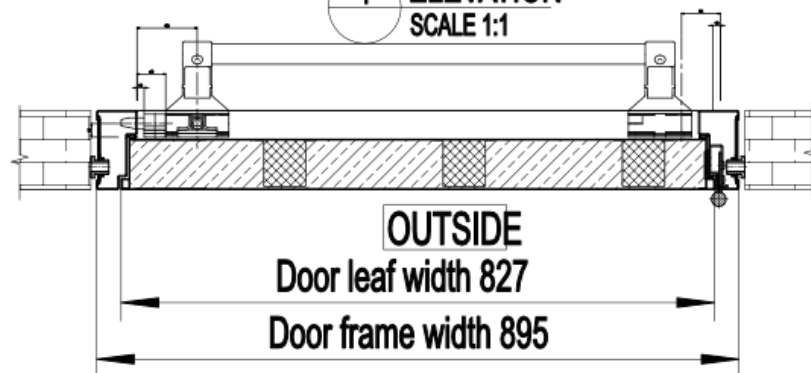
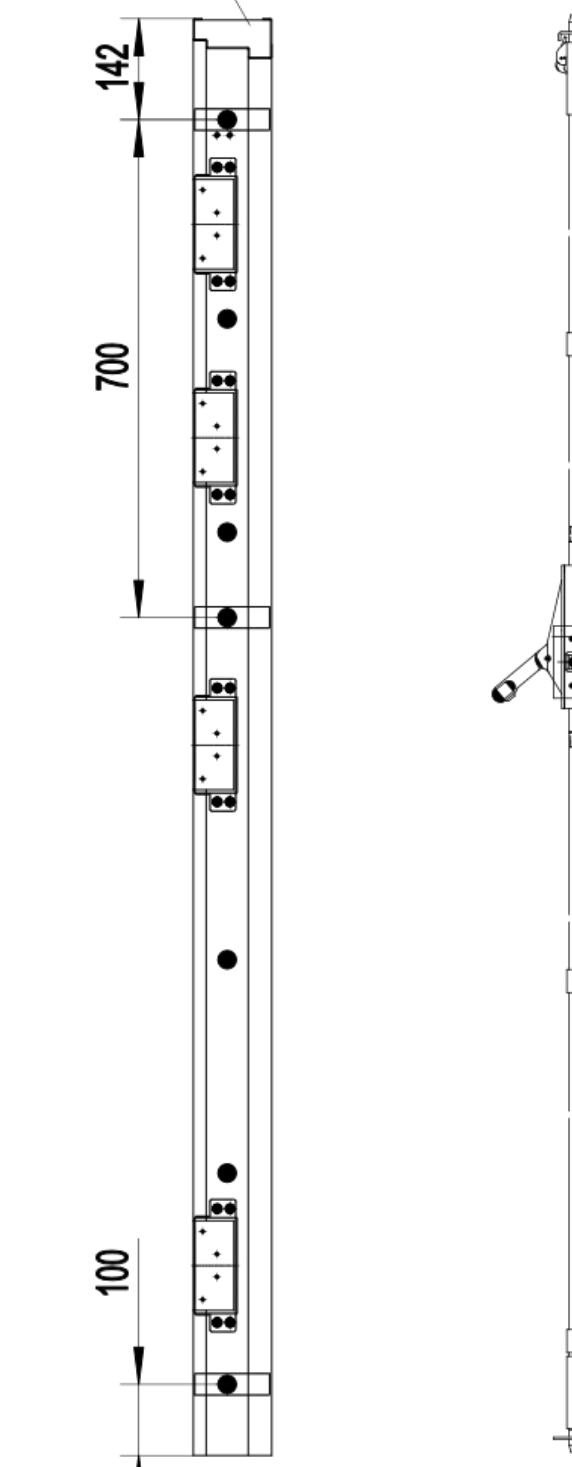
Door frame height 2020

Door leaf height 1976



3 SECTION
SCALE 1:1

Reinforcement



2 PLAN
SCALE 1:1

OUTSIDE

Door leaf width 827

Door frame width 895

Fire Rated Fire Exit Door (FD30)

Available Sizes

795x2020mm

845x2020mm

895x2020mm

995x2020mm

1095x2020mm

1185x2020mm

1. 2.0mm Galvanised steel
2. Double skinned 1.2mm galvanised steel
3. 4 Large stainless steel ball bearing hinges
4. Self-adhesive 'V' seal
5. Mineral wool insulation
6. Trip catch
7. Shootbolt rod
8. EXIDOR 700 series 703B panic bar
9. Shootbolt into threshold
10. Door closer reinforcement
11. 4 Dog bolts
12. Jemmy Bar Lip

U-Value: 1.99

Acoustic Value: 38dB