

A photograph of a dark grey steel personnel door set installed in a wooden building. The door is set within a wooden frame and has a silver handle. The building's exterior is made of horizontal wooden planks. To the right of the door, there is a black metal lamp post with a decorative top. The ground in front of the door is paved with dark grey tiles.

## Steel Personnel Door Range

---

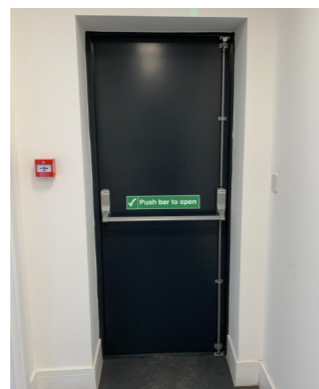
Our range of Personnel Access Doors & Emergency Exit Doors are an ideal security upgrade to your property and are available in RAL 7016 Anthracite Grey from stock.

# Perfect for pedestrian access & emergency exits

Our personnel door range is perfect for traditional structural openings of 900mm & 1000mm x 2100mm from stock. It can also be customised to meet your specific needs, including powder coating, ironmongery, and much more.

Our personnel access door features our industry leading 19 point locking system with genuine HOOPLY™ handles and locks.

Our fire escape has an EXIDOR™ 294 adjustable 2 point security push bar installed as standard with the option to add an outer access device.



VIEW THE FULL RANGE



Personnel Access Door



Emergency Exit Door

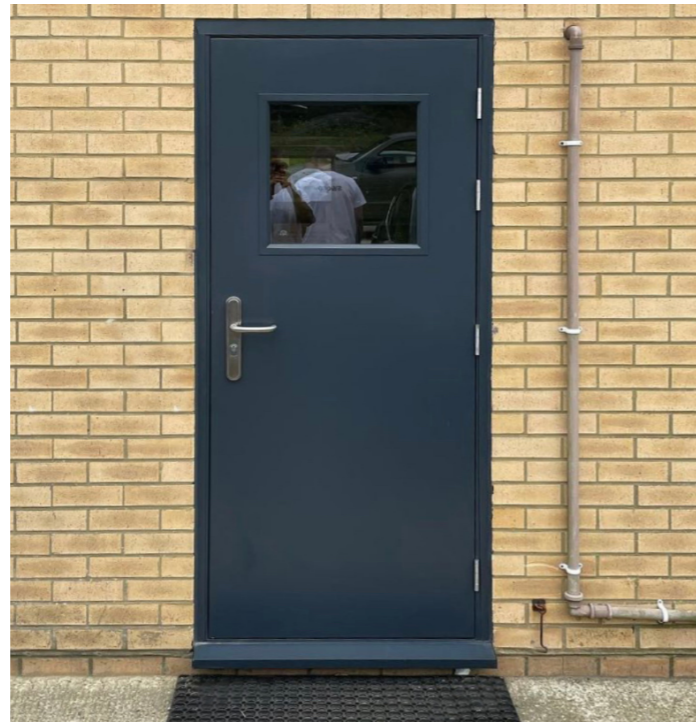
DOOR SIZE (MM)	890-990x2095
DOOR DEPTH	50mm Thickness
MATERIAL & GAUGE	1.0mm Galvanised Steel
INT. REINFORCING	3 x Reinforced Bars
DOOR & FRAME SEAL	<b>FRAME</b> - Nylon Self Adhesive V-seal <b>DOOR</b> - Flat Compression Self Adhesive Seal
FRAME DEPTH	90mm Depth
MATERIAL & GAUGE	1.8mm Galvanised Steel I
HINGES	4 x S/Steel Ball Bearing Hinges
ACOUSTIC RATING	35dB
THERMAL VALUE	2.2W/m2.k

# Vision Panels

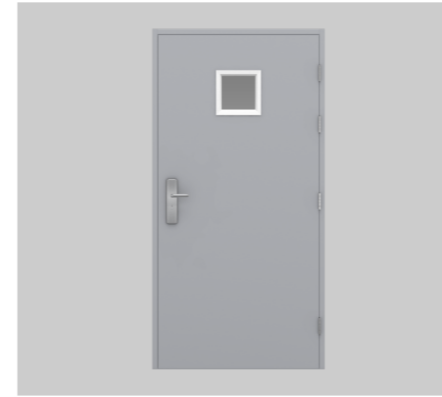
All of our glazing options include clear laminated glass & anti-tamper vision panels as standard helping increase visibility and improve the reach of light improving your property internal conditions, without compromising on security.

Choose from a range of sizes and positioning options, starting from 225mm x 225mm to 650mm x 1700mm.

For all glazed panels purchased with a door, the frames are powder coated to match. These panels are also sold separately.



## Vision Panel Sizes



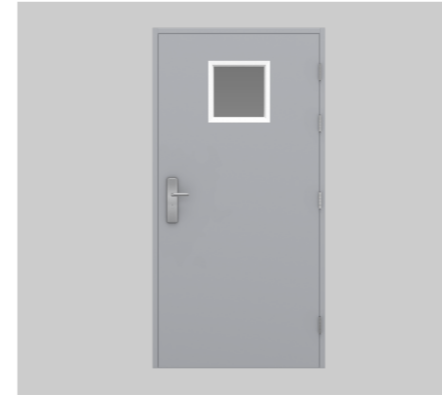
225mm x 225mm



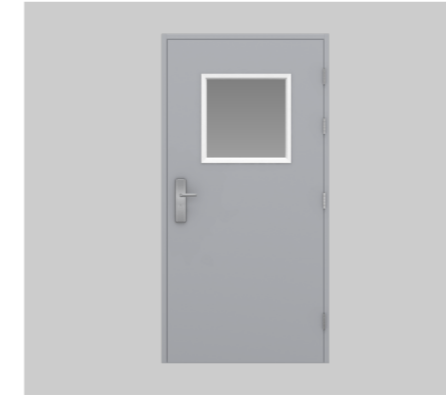
225mm x 530mm



225mm x 1524mm



327mm x 327mm



530mm x 530mm



650mm x 800mm  
Half Door



650mm x 1700mm  
Full Door



305mm x 305mm  
Porthole



VIEW THE  
FULL RANGE

# Louvre Panels

Offering up to 50% additional airflow, our louvres are a perfect for use on plant rooms, boiler rooms, bin stores & other applications needing a combination of airflow, ventilation & security.

Ranging in sizes, from as small as 225mm x 225mm to 479mm x 1546mm with a choice of position, create the perfect door to suit your property.

These panels are available to be purchased with a door or separately. When purchasing your louvred panel with a door the panels are powder coated to colour match.



## Louvre Panel Sizes



327mm x 327mm



479mm x 479mm



632mm x 632mm



479mm x 1546mm



225mm x 1546mm

## Additional Options



### Fly Mesh

This is a great additional option you can add onto your louvred doors which ensures flying insects or debris does not enter your property through your louvre panel.



VIEW THE  
FULL RANGE

# Handles

We are the UK's only approved supplier of HOOPLY™ handles, which are compatible with our range of steel security doors, but also commonly used on container doors.

From standard lever handles, to stainless steel security models, HOOPLY™ handles provide unparalleled security at unbeatable value.

We also have blanking plate options that are made in-house which are a great alternative if you only require an interior handle.

The Borg Code Lock option is ideal when you need to control and restrict access to certain individuals.



## Handle Options



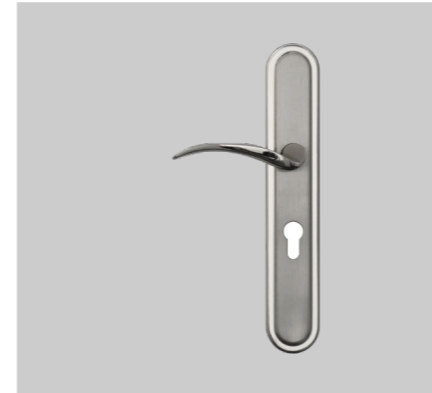
Standard Handle  
#5586



Stainless Steel Handle  
#918901



Stainless Steel Handle  
#918902



UPVC Style Handle  
#2018



Door Knob  
#2066X



Code Lock



External Blanking Plate\*



External Blanking Plate with key access\*

\* Blanking plates are supplied white as standard, or if your door is being powder coated it can be coloured to match



VIEW THE  
FULL RANGE

# EXIDOR™ 200 Series

Our full range of fire exit doors come fitted with EXIDOR™ hardware as standard.

We are also an authorised retailer of EXIDOR™ panic hardware products. With the combination of styling and quality, the range of emergency exit hardware is ideal for use where a safe and speedy exit is required.

If you require to use your fire exit door as an entrance, an outer access device (OAD) would be perfect for you.



VIEW THE FULL RANGE



294a Panic Bar

## Push Bars & Pads



296 Panic Bar



294a Panic Bar



285a Panic Bar



297 Panic Latch

## Outer Access Devices (OAD's)



302 OAD With Knob



322 OAD With Lever



Code Lock

# Doors that can fit any aperture

If one of our standard sizes doesn't quite suit your requirements, we have a variety of extension panel options to help fit your opening, ensuring a easy installation process and a seamless completed look to your property.

Whether your opening requires a 5mm extension or a 1000mm extension, our frame extensions can ensure the door fits perfectly to your property while still looking stylish and modern.

Over head and expanding side panels are available in a range of standard sizes from stock, and are powder coated to match when purchased with a door.

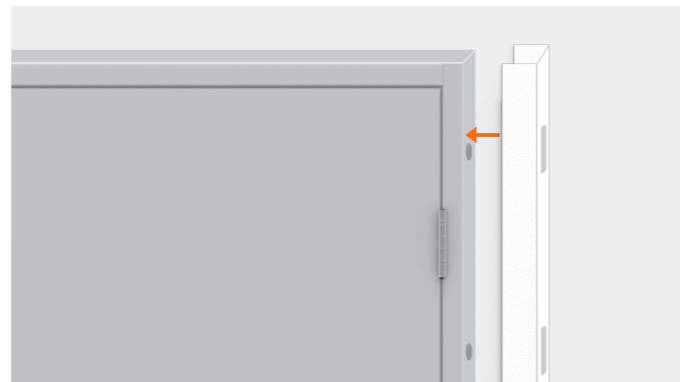
## Over Head Panel



**Sizes Available: +25-300mm or custom size**

Our over head panels are a far stronger alternative to using timber or another form of packing. Manufactured from 1.5mm steel and powder coated white as standard or to match the colour of your door.

## Expanding Side Panel



**Sizes Available: +5-40mm , +50-85mm**

Our expanding side panels use wind out lugs that screw into pre-threaded holes at the fixing plate positions. These panels can ensure the door is fitted without any required form of packing.

## Frame Extensions

Our frame extensions can extend your door width and height up to an additional 150-1000mm. As these are made to order it can take up to 10 working days from order date plus delivery time.



### Solid Frame Extension

Our solid frame extensions are a great way to give your property a flush finish. These panels are fully insulated with Rockwool infill & are available in stock white or powder coated to match the colour of your frame.

Height: 150-1000mm

Width: 150-1000mm



### Glazed Frame Extension

Our glazed frame extensions are fully insulated, can be powder coated to match your door frame & has laminated toughened double glazing allowing additional natural light to pass through whilst still keeping your property secure.

Height: 150-1000mm

Width: 150-1000mm

Glass Type: Clear, Satin (Opaque) & Cotswold Effect



### Louvred Frame Extension

Our louvred frame extensions are designed for applications that require constant airflow such as bin rooms, plant rooms & industrial units. These are supplied in stock white with the option to powder coat to match your door.

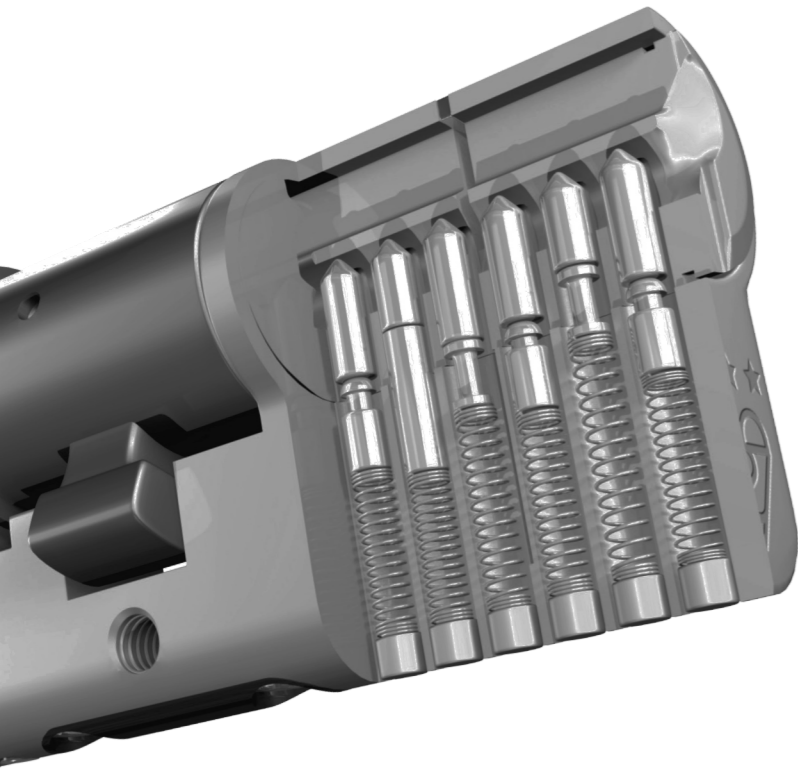
Height: 150-1000mm

Width: 150-1000mm

Airflow: Up to 50%

# Upgrade your doors to the best security

We offer security upgrades on our doors to allow you to increase security, with a budget in mind. Our security upgrade options include some different components at the main lock and handle of the door.



**UAP Kinetica  
3\* Kitemarked Cylinder**

## Cast Cylinder Covers



Our high security stainless steel cylinder cover ensures the cylinder is protected and it has been designed to fit perfectly with our HOOPLY™ handle range.

## Stainless Steel Handles



Our security upgrade handles are made from heavy duty stainless steel material making them robust & long lasting. In addition, these genuine HOOPLY™ handles feature an anti drill euro cylinder cover.

## 3\* Kitemark Cylinder



Our 3\* Kitemark Cylinder has enhanced security features and has anti tilt technology blocking access to the bolt during an attack.



Anti-Snap



Anti-Drill



Anti-Bump



Anti-Pick

## Additional Upgrades



## Drop Bar Kit

For additional security you can add a drop-bar kit. This kit consists of 4-8 brackets (colour matched to your door), 2 drop bars (Traffic Yellow) and fixings. Easy to fit, they are suitable for both inward or outward opening doors.



## Security Trim

The security trim will protect your property as well as give it a professional finished look. This kit is fast and easy to fit, protects your fixings from attack and eliminates the risk of tampering.



## Tower Bolt

Our heavy duty tower bolt has been designed for use on fire escape doors to complement the EXIDOR™ panic furniture. These add an extra level of security to your door by bolting into the frame.





**LATHAM'S<sup>®</sup>**  
STEEL SECURITY DOORSETS



35/37 Hainge Road, Tividale, Oldbury,  
West Midlands, B69 2NY



01384 220050



[sales@lathamssteeldoors.co.uk](mailto:sales@lathamssteeldoors.co.uk)



[www.lathamssteeldoors.co.uk](http://www.lathamssteeldoors.co.uk)

