



Fire Exit Door Range

Compliant with UK fire exit regulations, our fire exit doors are available in a range of sizes and are all fitted with EXIDOR™ panic hardware.

Secure & cost effective fire escape security

Our fire exit door range is available in a huge range of sizes from stock. All of these doors can be personalised to suit your requirements. Outer access devices (OAD's) are available as an add on if you also wish to use a fire exit as an entrance.

With both security and safety in mind, we have a range of security upgrades available.

All of our fire exit doors are fitted with weather & draught proof seals as standard and a high quality polyester powdercoat finish, ensuring that they are built to last.



VIEW THE
FULL RANGE



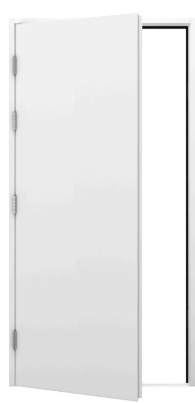
Budget Fire
Exit Door



Security Fire
Exit Door



High Security
Fire Exit Door



Blank Steel
Door

| | | | | | | |
|-------------------|------------------------------------|--|---------------------------------|--------------------------------------------|------------------------|---------------------------------|
| DOOR SIZE (MM) | 845-995x2020 | | 695-1195x2020 | | 795-995x2020 | 845-995x2020 |
| DOOR DEPTH | 45mm Thickness | | 50mm Thickness | | 70mm Thickness | 50mm Thickness |
| MATERIAL & GAUGE | 0.8mm Galvanised Steel | | 1.0mm Galvanised Steel | | 1.2mm Galvanised Steel | 1.0mm Galvanised Steel |
| INT. REINFORCING | None | | 3 x Reinforced Bars | | 4 x Reinforced Bars | 3 x Reinforced Bars |
| DOOR & FRAME SEAL | FRAME - Nylon Self Adhesive V-seal | | | DOOR - Flat Compression Self Adhesive Seal | | |
| FRAME DEPTH | 90mm Depth | | | 110mm Depth | | 90mm Depth |
| MATERIAL & GAUGE | 1.4mm Galvanised Steel | | 1.8mm Galvanised Steel | | 2.0mm Galvanised Steel | 1.8mm Galvanised Steel |
| HINGES | 3 x S/Steel Ball Bearing Hinges | | 4 x S/Steel Ball Bearing Hinges | | 4 x S/Steel Hinges | 4 x S/Steel Ball Bearing Hinges |
| ACOUSTIC RATING | 30dB | | 35dB | | 38dB | 35dB |
| THERMAL VALUE | 2.88W/m2.k | | 2.2W/m2.k | | 1.99W/m2.k | 2.2W/m2.k |

Fully fire regulation & building control compliant

Our Double Fire Exit Door are fully compliant to satisfy fire regulations and building control. We offer a range of both leaf & half and double doors to ensure you find the ideal door to meet your aperture with customisation options available.

These fire exit doors are secured with 8 stainless steel ball bearing hinges, 8 dog bolts and 2 point security push bar with adjustable shoot bolts.

Our doors can have an optional Exidor Outside Access Devices (OAD) which include knob, lever and code lock options, if access is required externally.



VIEW THE FULL RANGE



Double Fire Exit Door

| | | |
|-------------------|------------------------------------|--------------------------------------------|
| DOOR SIZE (MM) | LEAF & HALF - 1295-1395x2020 | DOUBLE - 1495-2195x2020 845-995x2020 |
| DOOR DEPTH | 50mm Thickness | |
| MATERIAL & GAUGE | 1.0mm Galvanised Steel | |
| INT. REINFORCING | 6 x Reinforced Bars | |
| DOOR & FRAME SEAL | FRAME - Nylon Self Adhesive V-seal | DOOR - Flat Compression Self Adhesive Seal |
| FRAME DEPTH | 90mm Depth | |
| MATERIAL & GAUGE | 1.8mm Galvanised Steel | |
| HINGES | 4 x S/Steel Ball Bearing Hinges | |
| ACOUSTIC RATING | 35dB | |
| THERMAL VALUE | 2.2W/m2.k | |

Vision Panels

All of our glazing options include clear laminated glass & anti-tamper vision panels as standard helping increase visibility and improve the reach of light improving your property internal conditions, without compromising on security.

Choose from a range of sizes and positioning options, starting from 225mm x 225mm to 650mm x 1700mm.

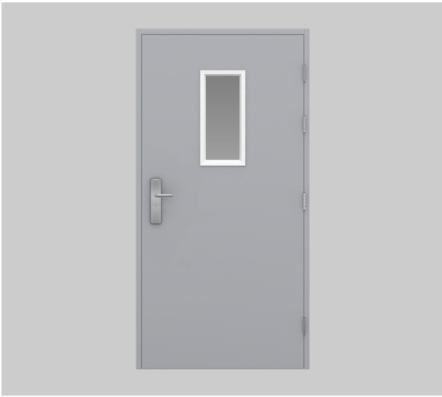
For all glazed panels purchased with a door, the frames are powder coated to match. These panels are also sold separately.



Vision Panel Sizes



225mm x 225mm



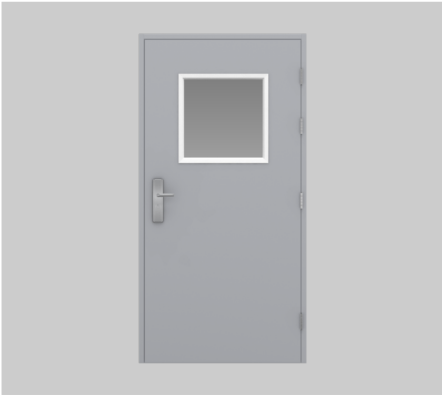
225mm x 530mm



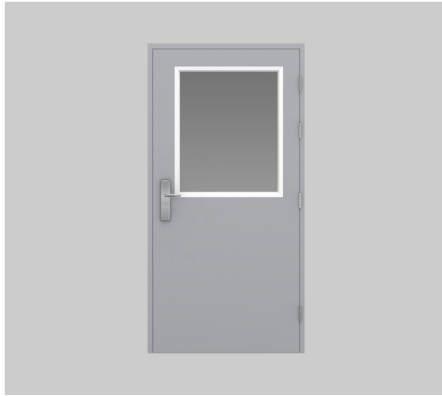
225mm x 1524mm



327mm x 327mm



530mm x 530mm



650mm x 800mm
Half Door



650mm x 1700mm
Full Door



305mm x 305mm
Porthole



VIEW THE
FULL RANGE

Louvre Panels

Offering up to 50% additional airflow, our louvres are a perfect for use on plant rooms, boiler rooms, bin stores & other applications needing a combination of airflow, ventilation & security.

Ranging in sizes, from as small as 225mm x 225mm to 479mm x 1546mm with a choice of position, create the perfect door to suit your property.

These panels are available to be purchased with a door or separately. When purchasing your louvred panel with a door the panels are powder coated to colour match.



Louvre Panel Sizes



327mm x 327mm



479mm x 479mm



632mm x 632mm



479mm x 1546mm



225mm x 1546mm

Additional Options



Fly Mesh

This is a great additional option you can add onto your louvred doors which ensures flying insects or debris does not enter your property through your louvre panel.



VIEW THE
FULL RANGE

EXIDOR™ 200 Series

Our full range of fire exit doors come fitted with EXIDOR™ hardware as standard.

We are also an authorised retailer of EXIDOR™ panic hardware products. With the combination of styling and quality, the range of emergency exit hardware is ideal for use where a safe and speedy exit is required.

If you require to use your fire exit door as an entrance, an outer access device (OAD) would be perfect for you.



VIEW THE
FULL RANGE



294a Panic Bar

Push Bars & Pads



296 Panic Bar



294a Panic Bar



285a Panic Bar



297 Panic Latch

Outer Access Devices (OAD's)



302 OAD With Knob



322 OAD With Lever



Code Lock

EXIDOR™ 700 Series

Used on our range of High Security Fire Exit Doors, the 700 series is perfect for use where a higher level of security is required.

Available in single, two, three or four point locking, depending on the level of security required, we also have a choice of outer access devices (OAD's) and additional heavy duty tower bolts available.



703B 3 Point Push Bar

Push Bar & Lever Actions



701B Single Point Push Bar



702B 2 Point Push Bar



704B 2 Point Push Bar



701BD 3 Point Double Door Push Bar



701BD 3 Point Double Door Push Bar



742BD 4 Point Double Door Push Bar



701L Single Point Lever Handle



702L 2 Point Lever Handle



703L 3 Point Lever Handle

Outer Access Devices & Extras



709EC OAD With Knob



710EC OAD With Lever



HS293 Heavy Duty Tower Bolt



VIEW THE
FULL RANGE

Doors that can fit any aperture

If one of our standard sizes doesn't quite suit your requirements, we have a variety of extension panel options to help fit your opening, ensuring a easy installation process and a seamless completed look to your property.

Whether your opening requires a 5mm extension or a 1000mm extension, our frame extensions can ensure the door fits perfectly to your property while still looking stylish and modern.

Over head and expanding side panels are available in a range of standard sizes from stock, and are powder coated to match when purchased with a door.

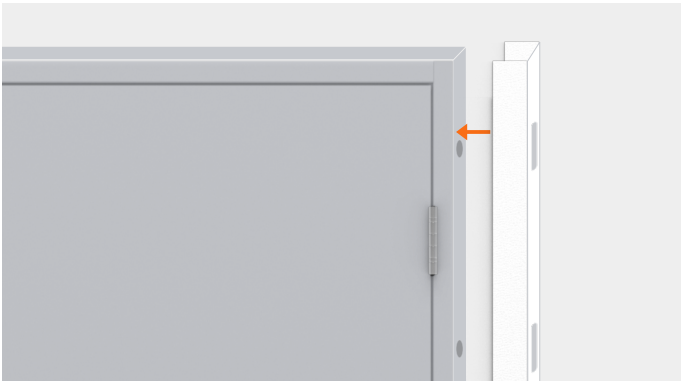
Over Head Panel



Sizes Available: +25-300mm or custom size

Our over head panels are a far stronger alternative to using timber or another form of packing. Manufactured from 1.5mm steel and powder coated white as standard or to match the colour of your door.

Expanding Side Panel



Sizes Available: +5-40mm , +50-85mm

Our expanding side panels use wind out lugs that screw into pre-threaded holes at the fixing plate positions. These panels can ensure the door is fitted without any required form of packing.

Frame Extensions

Our frame extensions can extend your door width and height up to an additional 150-1000mm. As these are made to order it can take up to 10 working days from order date plus delivery time.



Solid Frame Extension

Our solid frame extensions are a great way to give your property a flush finish. These panels are fully insulated with Rockwool infill & are available in stock white or powder coated to match the colour of your frame.

Height: 150-1000mm

Width: 150-1000mm



Glazed Frame Extension

Our glazed frame extensions are fully insulated, can be powder coated to match your door frame & has laminated toughened double glazing allowing additional natural light to pass through whilst still keeping your property secure.

Height: 150-1000mm

Width: 150-1000mm

Glass Type: Clear, Satin (Opaque) & Cotswold Effect



Louvred Frame Extension

Our louvred frame extensions are designed for applications that require constant airflow such as bin rooms, plant rooms & industrial units. These are supplied in stock white with the option to powder coat to match your door.

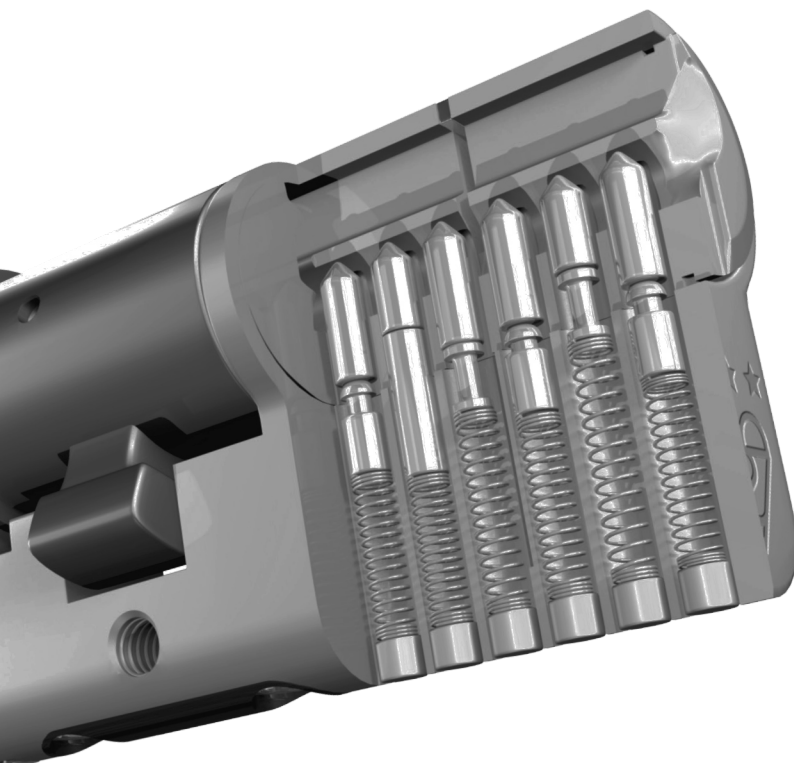
Height: 150-1000mm

Width: 150-1000mm

Airflow: Up to 50%

Upgrade your doors to the best security

We offer security upgrades on our doors to allow you to increase security, with a budget in mind. Our security upgrade options include some different components.



UAP Kinetica
3* Kitemarked Cylinder

Outer Access Device Security Features



- ✓ Supplied with special shear screw designed to break under excessive force
- ✓ Surface mounted on the outside of the door using three concealed machine screws

OAD Security Cylinder Upgrade



Our security half cylinder replaces the free issue Exidor cylinder and increases security by protecting against attacks aimed at the cylinder.



Anti-Snap



Anti-Drill



Anti-Bump



Anti-Pick

Additional Upgrades



Drop Bar Kit

For additional security you can add a drop-bar kit. This kit consists of 4-8 brackets (colour matched to your door), 2 drop bars (Traffic Yellow) and fixings. Easy to fit, they are suitable for both inward or outward opening doors.



Security Trim

The security trim will protect your property as well as give it a professional finished look. This kit is fast and easy to fit, protects your fixings from attack and eliminates the risk of tampering.



Tower Bolt

Our heavy duty tower bolt has been designed for use on fire escape doors to complement the EXIDOR™ panic furniture. These add an extra level of security to your door by bolting into the frame.



LATHAM'S[®]

STEEL SECURITY DOORSETS



35/37 Hainge Road, Tividale, Oldbury,
West Midlands, B69 2NY



01384 220050



sales@lathamssteeldoors.co.uk



www.lathamssteeldoors.co.uk

