

Modular Building Specific Product List

1. **Full Product List**
2. **Specifications and Drawings:**
 - a. Personnel Door
 - b. Personnel Door with Anti Jemmy Bar Lip
 - c. Blank Door
 - d. Window Shutter
 - e. Fire Rated Door
 - f. Residential Style Door
3. **HOOPLY™ Products**
4. **Other Products and Services**
 - a. Steel Security Doors
 - b. Modification Services, Upgrades and Accessories



1. Full Product List

Available Sizes:

Sizes are external frame dimensions in mm

Handing:

Hinge side / active leaf, viewed outside

Personnel Doors

910x2065	LH / RH
1110x2065	LH / RH
1210x2065	LH / RH
1894x2065 (Double Leaf)	LH / RH
<i>more sizes available in our 'non-modular building specific' steel door ranges</i>	

Personnel Doors (with additional Anti Jemmy Bar Lip)

910x2065	LH / RH
1110x2065	LH / RH

Blank Doors (also available with pre-installed Fire Exit Hardware)

910x2065	LH / RH
1110x2065	LH / RH
1210x2065	LH / RH
1894x2065 (Double Leaf)	LH / RH
<i>more sizes available in our 'non-modular building specific' steel door ranges</i>	

Security Window Shutters

1060 x 1035	LH
-------------	----

Aluminium Sliding Glazing Units

Single glazed for window shutter	
945 x 945	N/A
Double glazed for window shutter	
945 x 945	N/A

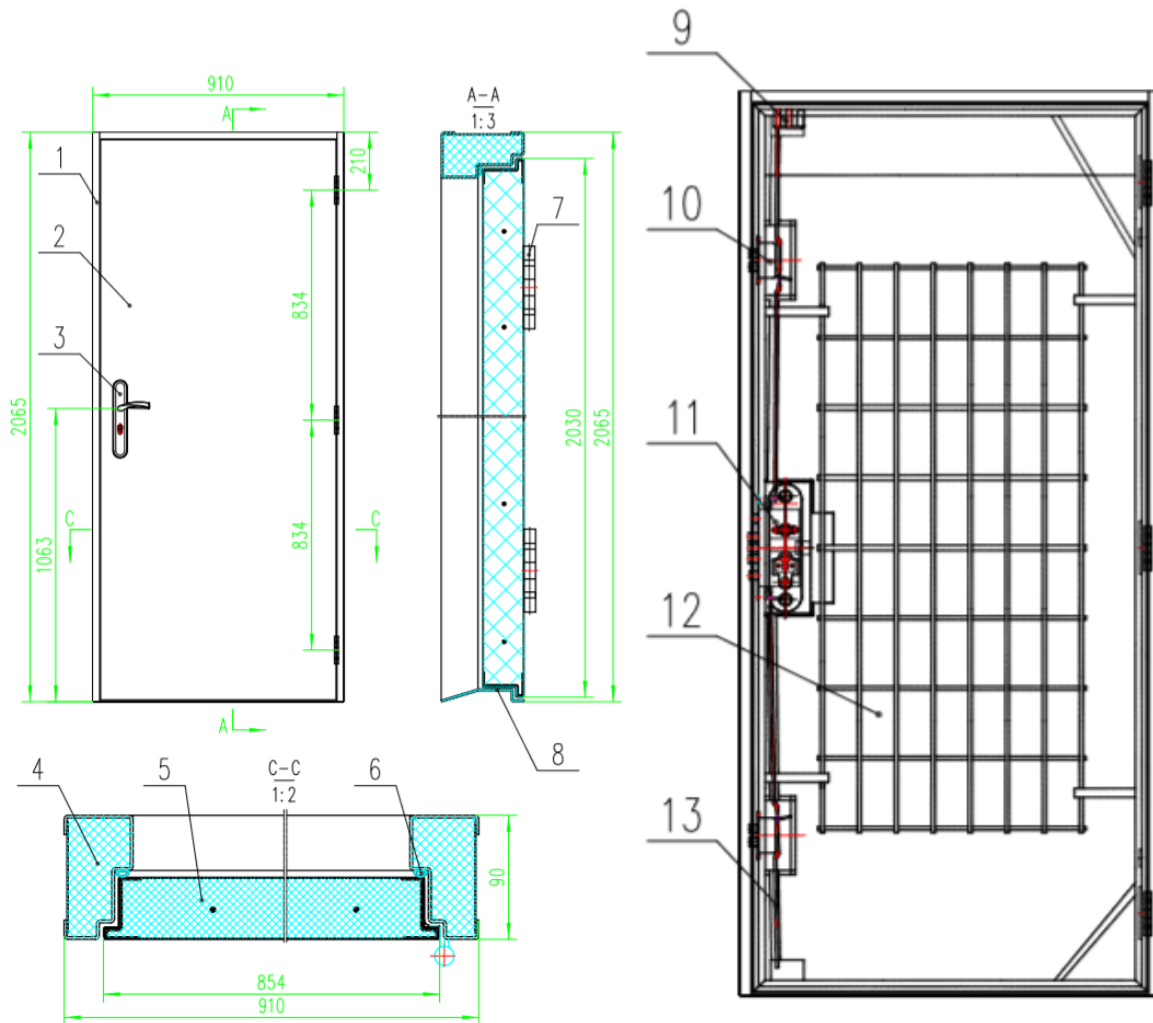
Fire Rated Steel Doors

845 x 2020	LH / RH
895 x 2020	LH / RH
995 x 2020	LH / RH
1145 x 2020	LH / RH
1295 x 2095 (Leaf and Half)	LH
1495 x 2095 (Double Leaf)	LH
1695 x 2095 (Double Leaf)	LH
1795 x 2095 (Double Leaf)	LH
1995 x 2095 (Double Leaf)	LH

Residential Style Doors

910x2065	LH / RH
1110x2065	LH / RH
1210x2065	LH / RH
1894x2065 (Double Leaf)	LH / RH
<i>more sizes available in our 'non-modular building specific' steel door ranges</i>	

2a. Personnel Door Specification



1/ Galvanised, 90mm enclosed frame

2/ 45mm, galvanised steel, reinforced door leaf with sub frame

3/ Genuine HOOPLY™ S/Steel lever handles

4/ High density PU foam insulation in frame

5/ High density PU foam insulation in door leaf

6/ "V" Frame seal (hardwearing nylon material)

7/ S/Steel ball bearing welded hinges

8/ SS 2mm DDA compliant sealed threshold



9/ 3 Point top locks

10/ Genuine HOOPLY™ 502A side locks with fully enclosed lock box

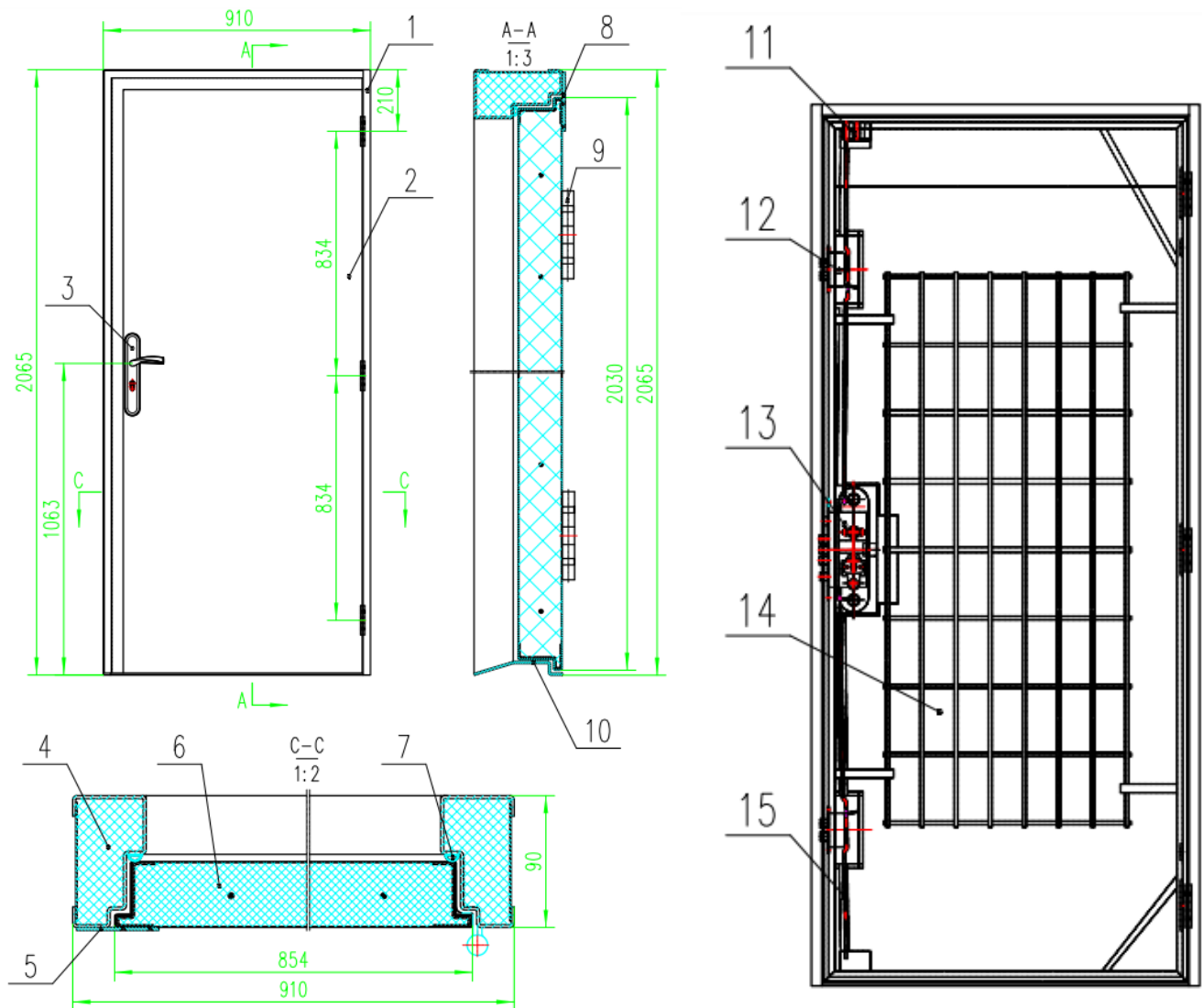
11/ Genuine HOOPLY™ security main lock with fully enclosed lock box

12/ Reinforcing 4mm round bar mesh inside door leaf

13/ Connecting multi point locking rods with welded tubes between lock boxes

14/ Extra reinforcing plate at the top of the door for door closers and friction stays

2b. Personnel Door with Anti Jammy Bar Lip Specification



1/ Galvanised, 90mm enclosed frame

2/ 45mm, galvanised steel, reinforced door leaf with sub frame

3/ Genuine SS lever handles

4/ High density PU foam insulation in frame

5/ 3mm Anti jemmy bar lip on door edge

6/ High density PU foam insulation in door leaf

7/ "V" Frame seal (hardwearing nylon material)

8/ 3mm Anti jemmy flange at top of door



9/ S/Steel ball bearing welded hinges

10/ S/Steel 2mm DDA compliant sealed threshold

11/ 3 Point top locks

12/ Genuine HOOPLY™ 502A side locks with fully enclosed lock box

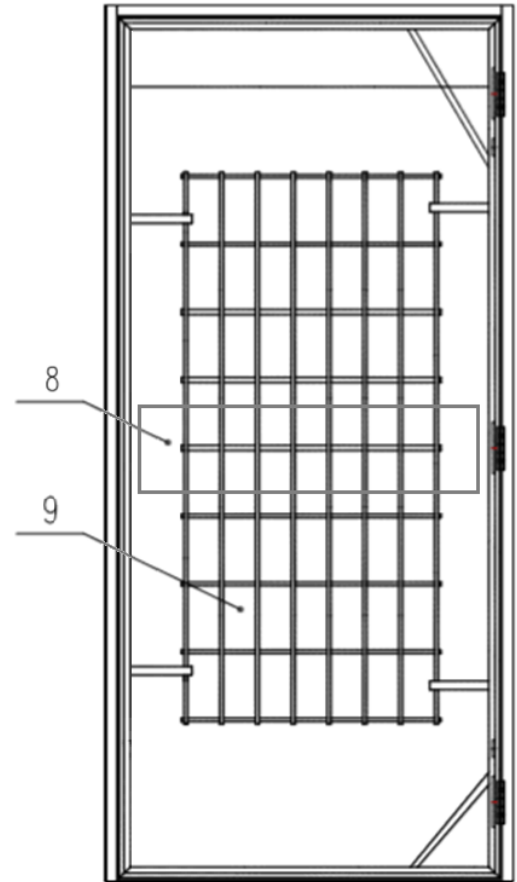
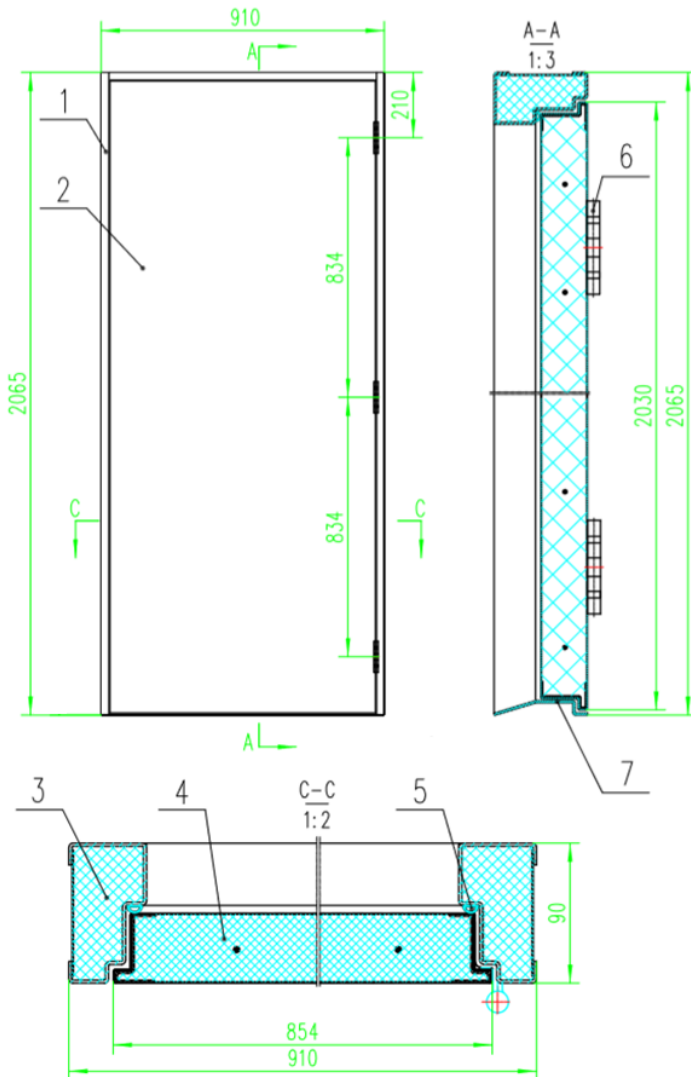
13/ Genuine HOOPLY™ security main lock with fully enclosed lock box

14/ Reinforcing 4mm round bar mesh inside door leaf

15/ Connecting multi point locking rods with welded tubes between lock boxes

16/ Extra reinforcing plate at the top of the door for door closers and friction stays

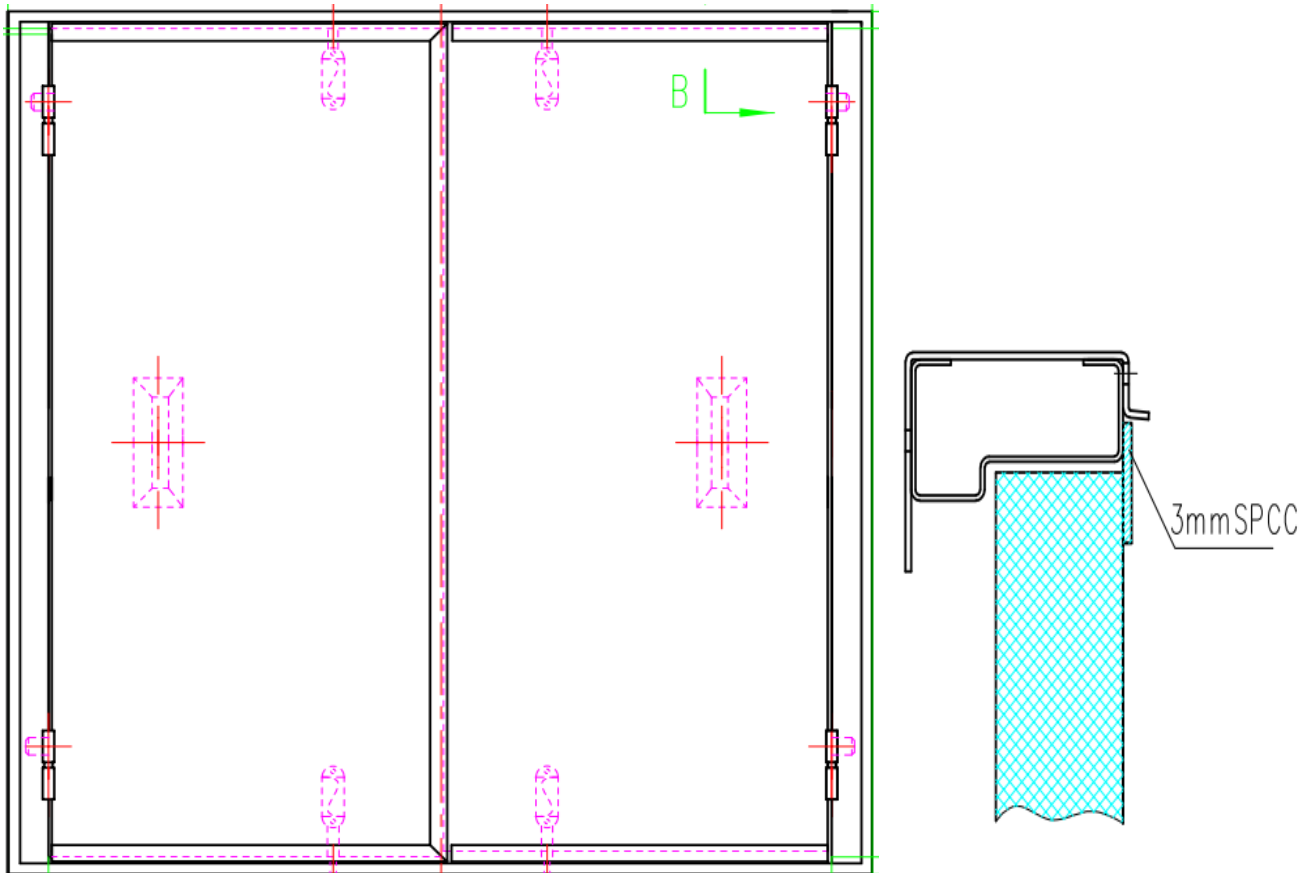
2c. Blank Door Specification



- 1/ Galvanised, 90mm enclosed frame
- 2/ 45mm, galvanised steel, reinforced door leaf with sub frame
- 3/ High density PU foam insulation in frame
- 4/ High density PU foam insulation in door leaf
- 5/ "V" Frame seal (hardwearing nylon material)
- 6/ S/Steel ball bearing welded hinges
- 7/ SS 2mm DDA compliant sealed threshold

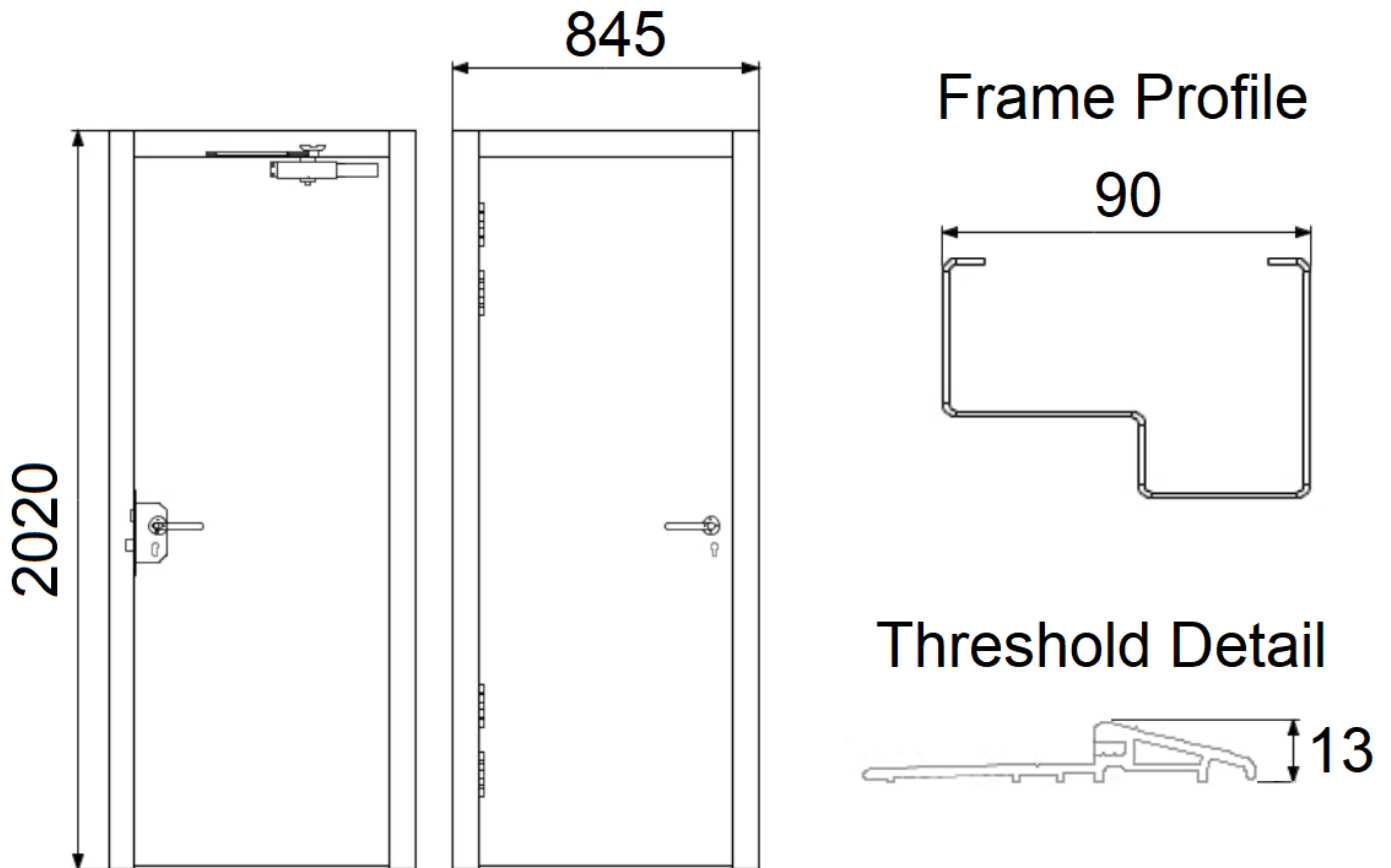
- 8/ 3mm reinforcing plates for panic bar or alternative lock installation
- 9/ Reinforcing 4mm round bar mesh inside door leaf
- 10/ Extra reinforcing plate at the top of the door for door closers, friction stays and panic hardware.

2d. Container Window Shutter Specification



- | | |
|--|---|
| 1/ Fully galvanised 1058mm wide x 1038mm high | 6/ 45mm shutter leaves with high density PU foam insulation |
| 2/ Frame with no paint around frame edge for ease of welding with reduced prep' required | 7/ Internal reinforcing around finger bolts |
| 3/ Frame with high density PU foam insulation | 8/ 3mm anti jemmy flange |
| 4/ 2 x drain plugs | 9/ 4 no finger bolts |
| 5/ 4 x SS lift off flag hinges | 10/ 2 x finger pull handles |
| | 11/ Reinforcing 4mm round bar mesh inside door leaf |

2e. Fire Rated Steel Door Specification



1/ 90mm 1.5mm Zintec steel frame

2/ 50mm 1.2mm Zintec door leaf

3/ Honeycomb infill

4/ Union sash lock

5/ SS return to door lever handles

6/ Separate escutcheon and double euro cylinder

7/ Dorma TS72 door closer installed on push side

8/ Fire rated 388S seal

9/ # S/Steel ball bearing hinges

10/ 13mm stepped aluminium threshold (DDA compliant)

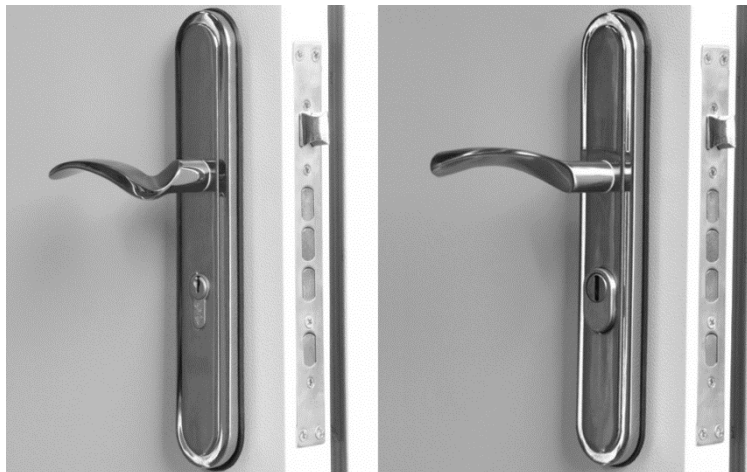
11/ Certified fire rating to 4 hours (FD240)

2d. Residential Style Door Specification

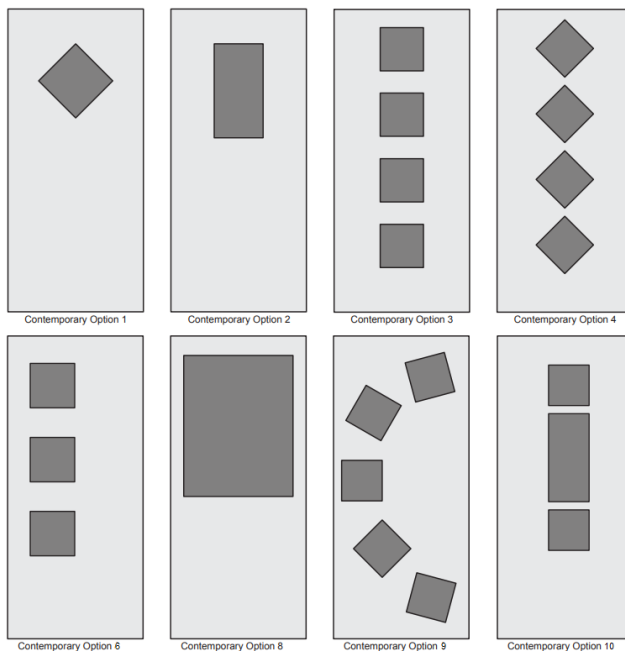


Manufactured using our Personnel Doors (see 2a.), we add genuine HOOPLY™ UPVC style handles and composite glazed panels to create a more 'homely' style door without losing the security benefits.

Ideal for use with modular buildings or containers being sold into the temporary accommodation sector.



Available with a range of contemporary style vision panels and glazing options including double glazed opaque, Cotswold and even led designs.



3. HOOPLY™ Products

As an official HOOPLY™ partner, we stock the largest range of genuine HOOPLY™ products available in the market. Commonly used within the container industry and steel door manufacture, we stock all components, specializing in:

- HOOPLY™ main lock cases (gearboxes)
- HOOPLY™ side locks (auxiliary locks)
- HOOPLY™ lever handles
- HOOPLY™ euro cylinders and keys
- HOOPLY™ spares and accessories
- All other components, used in conjunction with HOOPLY™ products:



4. Other Products and Services

4a. Steel security doors

As well as Modular Building products, we also stock the largest range of steel security doors in the UK. With sizes ranging from 695 – 2195 wide and a stock infill panel range that can achieve a maximum external frame size of 2300(w)x2300(h), our range consists of:

- Steel Security Doors (with an industry leading 19 point locking system)
- Fire Exit Doors
- Louvred Doors
- Glazed Doors
- Residential Security Doors
- Custom Steel Doors (to any size)
 - o Fire Rated (up to 4 hours)
 - o Security Rated (LPS1175 SR1-6, STS202 BR1-6, PAS24, SBD)
 - o Acoustic Rated (up to 56dB)
 - o Insulated and Thermally Rated
 - o Personnel and Fire Exit

...all available in single and double configuration, in a choice of budget, security and high security specifications.

We pride ourselves in being the one-stop-shop for all of your security door needs. We hold over 10,000 doors in stock, giving us a unique offering, allowing you to visit unannounced and collect a personnel door, fire exit door and fire rated door off the shelf, all at the same time.



4b. Modification services, upgrades and accessories

When you purchase a stock door from us, you may choose to receive it as-is, or ask us to customise the door for you.

Powder Coat & Wet Spray Service



Our modular building industry specific range are prefinished in a grey paint, which are traditionally re-painted on site. However, we have a wet spray painting line in house if you require us to repaint the door in a colour of your choice.

Our other steel door ranges are held in stock prefinished in either a white or grey powder coat. We also have a powder coating facility in house to re-powder coat those doors to a RAL or BS colour of your choice.

Louvre Panels and Vision Panels



327mm x 327mm



479mm x 479mm



225mm x 225mm



225mm x 530mm



225mm x 1524mm



327mm x 327mm



479mm x 1549mm



610mm x 610mm



530mm x 530mm



Full Door



Half Door



2 x Half Door

Our steel louvre panels are all held in stock ready to be installed in-house or sent separate for installation on site. They can be installed with or without fly mesh if required.

Our steel vision panel frames can house single, double and triple glazing units in a variety of sizes, all held in stock.

Door Hardware and Furniture



We offer a huge range of stock accessories. Our range includes:

- Exidor panic hardware
 - o Push bars
 - o Outside access devices
- Door closers
- Friction stays
- Push plates
- Kick plates
- Letterboxes
- Door viewers
- Rain deflectors
- Handle choices:
 - o Range of HOOPLY™ handles
 - o Blanking plate
 - o High security code lock
- Euro cylinder options:
 - o Double and single cylinders
 - o Kitemark 1* and 3* cylinders
 - o Thumb turn cylinders
 - o Key alike facility
 - o Master suite options
 - o Key cutting service using our state-of-the-art key cutting machine

For hardware not listed above, we welcome the opportunity to quote to install your specified furniture.



Warehousing, fabrication and trade counter all within our 50,000 sq ft facility and HQ at Tividale, Birmingham
All deliveries are controlled in-house using our logistics team, our own fleet of vans & specialist 3rd party hauliers.



Contact our industry experts to discuss your requirements today.

Latham's Security Doorsets Ltd

35 - 37 Hainge Road, Tividale, Birmingham, B69 2NY

Tel: +44 (0) 1384 220 050

Mob: +44 (0) 7749 028 794

Email: modular@lathamsteeldoors.co.uk

Web: www.lathamsteeldoors.co.uk

