



▣ ELITE RANGE

INTRODUCTION

THE UK'S LEADING SUPPLIER OF STOCK & CUSTOM MADE STEEL SECURITY DOORS

Made famous by our Ultra Door, we are renowned for our vast range and quantity of stock on offer to the trade and general public, at Europe's most competitive prices.

We proudly maintain that our doors are only manufactured using galvanised steel; beware of security doors fashioned from untreated steels, as simply put, they will inevitably rust no matter the finish.

All of our steel security doors can be customised with a range of security upgrades, vision & louvre panels and access devices, such as code locks.

We also offer custom made steel security doors to any size and certification.

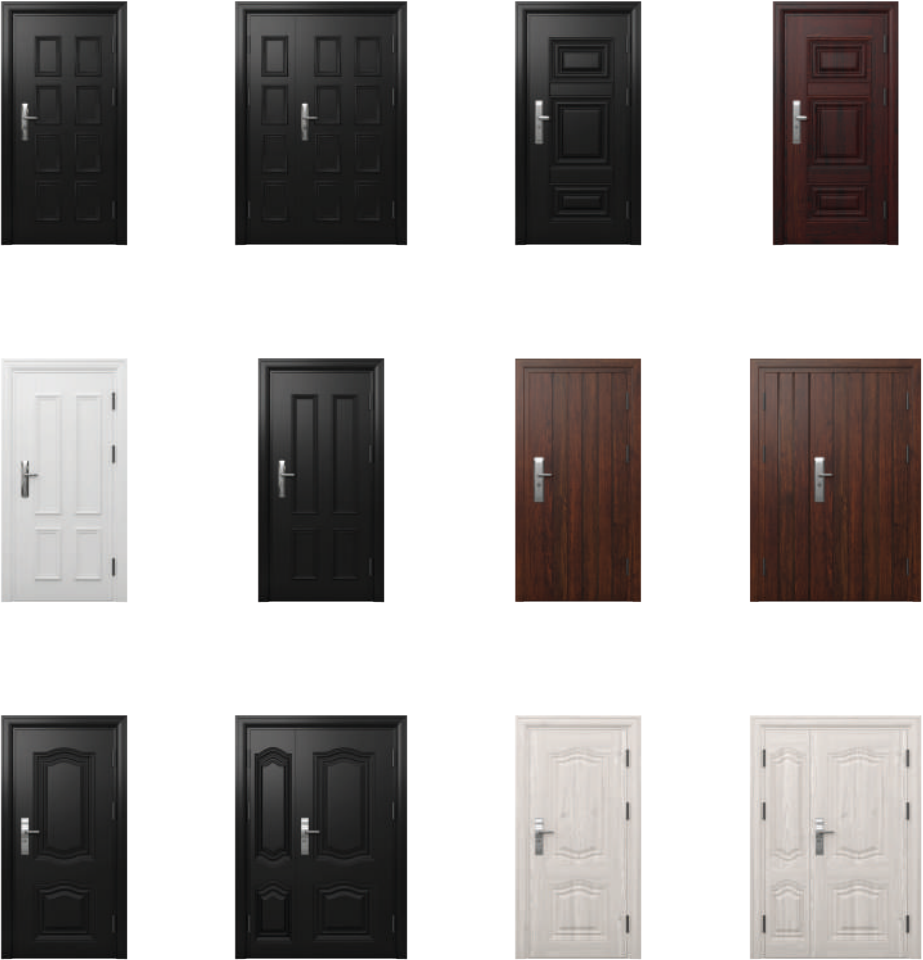


ELITE RANGE

Our Elite range of doors offer the same uncompromising level of security for which Latham's Steel Security Doorsets are so highly regarded, but with a style and finish to really impress.

Uncanny wood effect finishes and pristine black or white options ensure that there is an Elite door for almost every situation.

Discover our Elite range of doors and see for yourself why security doesn't have to mean a compromise on style.



SPECIFICATION & SECURITY

- 1

HIGH QUALITY FINISH
A heavy duty finish to the steel door and frame. This allows the door to be used in industrial, commercial and domestic situations, giving the same high security, whilst still being aesthetically pleasing.
- 2

DRAUGHT AND WEATHERPROOF SEALS
Pre-fitted to the doorset are all-round draught and weatherproof seals, sealing the door from water and draught, contributing towards high acoustic and thermal values.
- 3

HEAVY DUTY HINGES
3 Stainless steel hinges and 2 Dog bolts (fixed locking points) are on the hinge side of door leaf.
- 4

DDA COMPLIANT THRESHOLD
Disability Discrimination Act specifies a level threshold with a maximum upstand of 15mm with chamfered edges.
- 5

ANTI JEMMY BAR LIPS
2 anti jemmy bar lips are integrated into the door & frame, including on the top and hinge side, for added security.
- 6


LEVER HANDLES
A stylish set of heavy duty stainless steel lever handles finish off the clean look of the doorset. With a highly functional thumb turn internally, a separate single lock can be engaged for rapid security without keys.
- 7


MULTI POINT LOCKING SHOOT BOLT MECHANISM
A shoot bolt into the top of the frame, 10 shoot bolts into the latching side of the frame along with 2 ring hooks. Including the 2 dog bolts and latch, in total 16 points secure the door leaf in the frame.
- 8

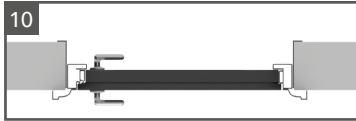
FULLY WELDED CONSTRUCTION FOR OPTIMUM STRENGTH
The doorframe is constructed using 2.0mm gauge steel and double skinned 1.0mm gauge steel for the door leaf. The door leaf is fully welded, encasing a honeycomb filler between the 2 skins, adding to it's high impact, thermal and acoustic values.
- 9

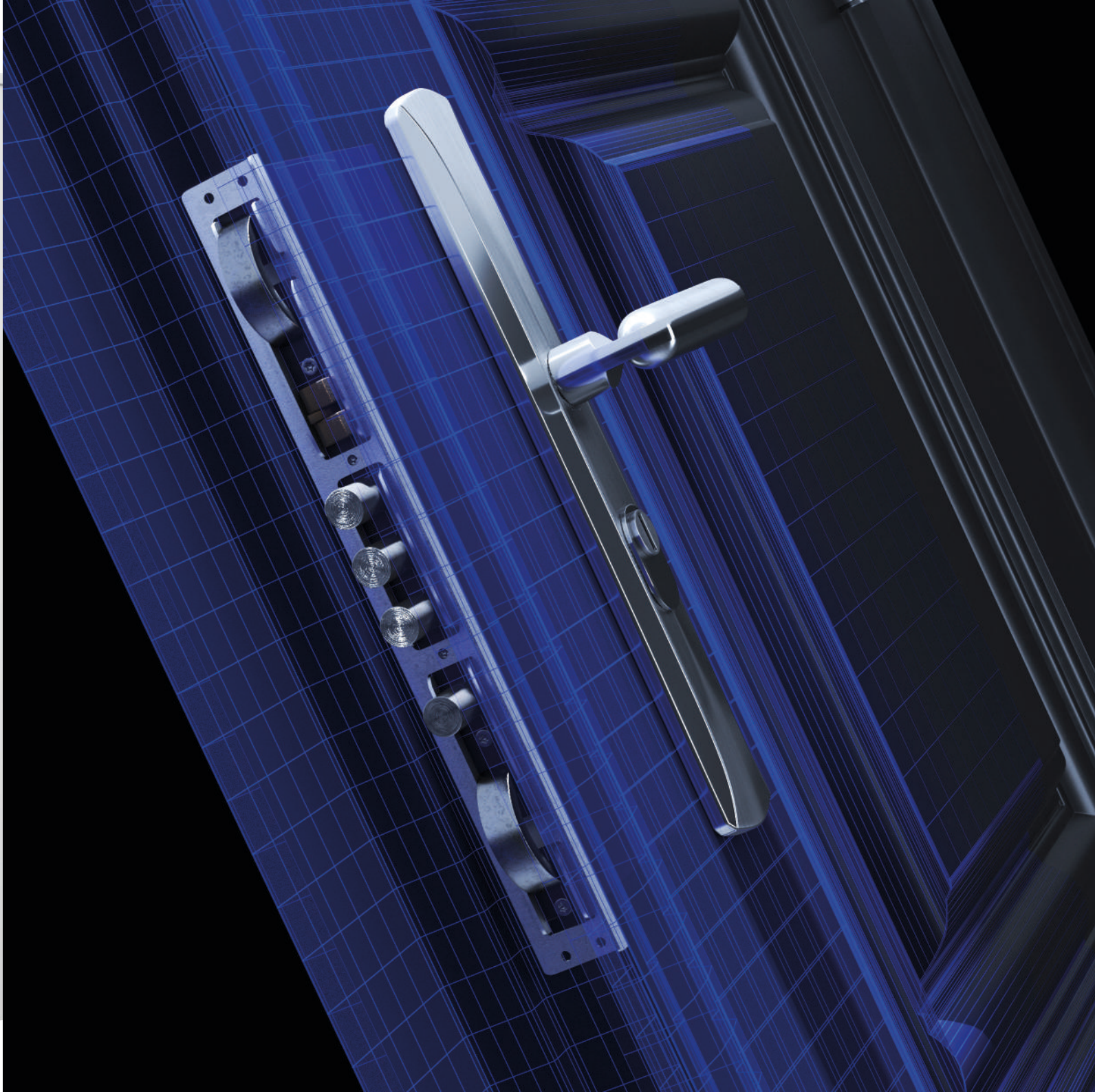
HEAVY DUTY EURO PROFILE CYLINDER
Incorporating anti-pick, anti-bump, anti-snap, anti-drill and anti-pull features.
- 10

VERSATILE FRAME CONFIGURATION
The innovative frame design allows for fitting in almost any situation.
- 7


- 7


- 10







KNIGHTSBRIDGE
RANGE



WINDSOR
RANGE



CHELSEA
RANGE



KENSINGTON
RANGE

OPTIONS



DOOR STYLE

CHELSEA

KENSINGTON

MAYFAIR

KNIGHTSBRIDGE

WINDSOR

AVAILABLE SIZES

Wraparound frame to suit:
845mm-1000mm x 2020mm-2100mm
1245mm-1400mm x 2020mm-2100mm

Wraparound frame to suit:
845mm-1000mm x 2020mm-2100mm

Wraparound frame to suit:
845mm-1000mm x 2020mm-2100mm

Wraparound frame to suit:
845mm-945mm x 2020mm-2100mm
1245mm-1345mm x 2020mm-2100mm

Wraparound frame to suit:
845mm-1000mm x 2020mm-2100mm
1245mm-1400mm x 2020mm-2100mm

COLOURS



HANDLE STYLES



OPTION 1

OPTION 2

OPTION 3

OPTION 4

OPTION 5





ELITE RANGE



35-37 Hainge Road
Tividale, Oldbury
West Midlands
United Kingdom
B69 2NY

+44 (0) 1384 220 050

 sales@lathamsteeldoors.co.uk

 www.lathamsteeldoors.co.uk