



STEEL SECURITY DOORS

Ultra Duty

STEEL SECURITY DOORS

Ultra Duty

Our most secure steel door yet, weighing up to 100kg! Known as the Ultra High Security Steel Door, it boasts a more robust stainless steel multi point locking system and a 40% thicker door compared to our Heavy Duty Security Door range.

It also features an innovative 'barb style' jemmy bar lip which crucially helped this security door achieve successful STS202 BR2 testing (LVL3 upgrade only)

Sizes (mm)

External Frame: 795, 845, 895, 995 x 2020

Infill Panels:

Side Panels: 30, 50, 80

Over Panels: 30, 45, 75, 100, 150, 200, 250, 300

Acoustic Value: 29 dB

U Value: 1.74

Security Enhancing Options

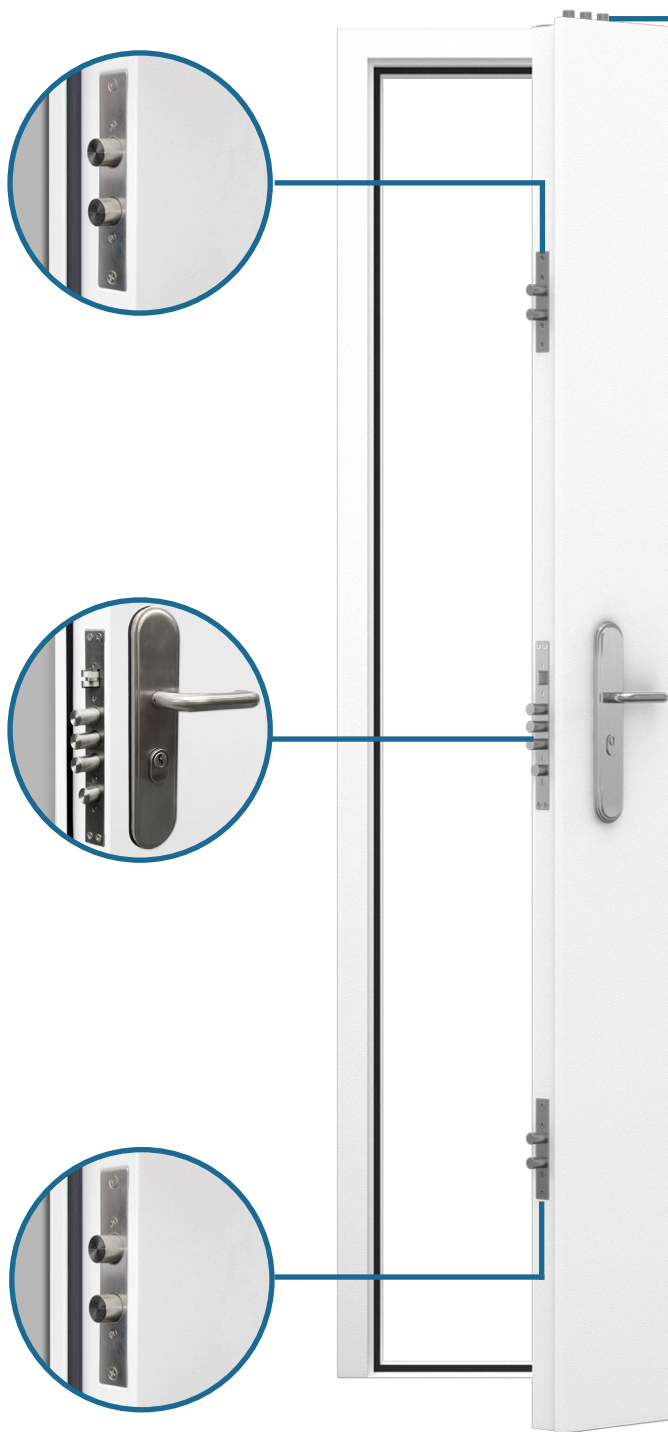
Level 1: Security Cylinder

Level 2: Level 1 + Stainless Steel Handles

Level 3: STS202 BR2 Package

Security Trim Kit For additional external door security

Drop Bar Kit For additional door security



Features

- **Heavy duty white textured polyester powder coated finish from stock**

We also offer a powder coating service to enable you to change the colour of your door and frame

- **Fully welded construction for optimum strength**

Door Frame: 2.0 mm galvanised steel

Door Leaf: Double skinned 1.0 mm galvanised steel

Door Leaf Core: Fibre Board Core, used for its high thermal, acoustic and impact properties.

- **5 Stainless steel heavy duty lift-off hinges**

6 Dog bolts (fixed locking points) on hinge side of door leaf

- **Multi point locking shoot bolt mechanism**

High security stainless steel multi point locking system with 3 shoot bolts into the top of the frame and 8 shoot bolts into the latching side of frame. Including the 6 dog bolts and latch, 17 points secure the door leaf in the frame.

- **Heavy duty stainless steel handles included as standard (#6198) with integral privacy lock**

Higher security handle upgrade (level 2 & 3) available to increase security (#6101) and STS202 BR2 3* kitemark cylinder upgrade.

- **Weather and draught proof seals installed as standard**

Our doors are fully weather proof and can be used externally

- **DDA (Disability Discrimination Act) compliant threshold**

- **Anti jemmy bar lip all around the door leaf, including the hinge side incorporating a 'barb-like' design to the latching side which hooks into place when closed**

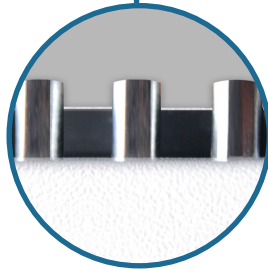
- **Internal frame welded case work to protect shoot bolts from falling debris**

- **Euro profile cylinder with unique ABC key system**

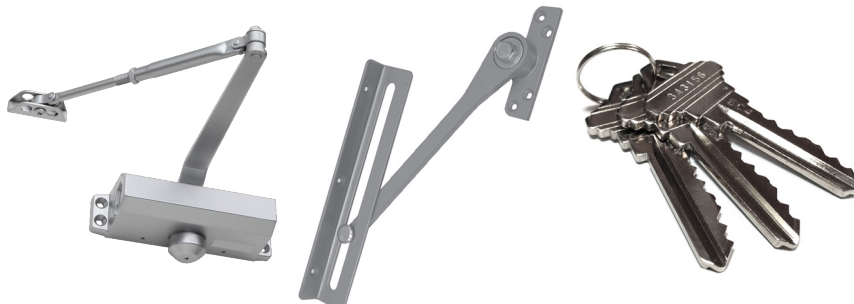
Heavy duty kite marked cylinder upgrade is available, and highly recommended. The upgraded cylinder has anti-pick, anti-bump, anti-snap, anti-drill and anti-pull features.

Included in level 1, 2 & 3 security upgrades.

Thumb turn and & keyed alike options also available.



Optional Extras



Door Closer

Heavy duty door closer, manufactured to comfortably close a door weighing up to 115KGs.

Available finished in satin silver.

Friction Stay

Suitable for steel outward opening doors.

Face mounted stay allows door opening to be limited to around 90 degrees.

Extra Keys

All our doors are supplied with 3 keys as standard.

Available for all of our door types, and security upgraded locks.

Price stated is per key.



Door Viewer

A simple, quick and easy job to install to any of our doorsets, and only takes a matter of minutes.

Viewers are available in chrome and satin chrome finishes.

Door Knocker

A classical shaped urn door knocker that is timeless in appearance. Suitable for modern and traditional front doors.

Available in chrome and satin chrome finishes.

Letterplate

The all in one letterbox solution for your front door. A telescoping sleeve accommodates a variety of door types.

Available in chrome and satin chrome finishes.

Handle Options



Hooply 2066T



Hooply 2166X



Hooply 6101



Hooply 2066X



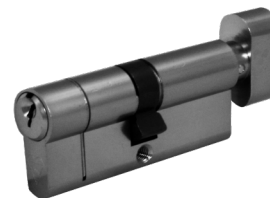
Hooply 2018T



Code Lock

Cylinder Configurations

Our personnel doors all come pre-fitted with euro cylinders. You can choose to have them keyed alike (same key to open all doors) or a thumb turn cylinder to lock the door internally without a key.



Louvre & Vision Panel Options



327mm x 327mm
Louvre Panel

479mm x 479mm
Louvre Panel

479mm x 1546mm
Louvre Panel

610mm x 610mm
Louvre Panel

225mm x 225mm
Vision Panel

225mm x 530mm
Vision Panel



225mm x 1543mm
Vision Panel

327mm x 327mm
Vision Panel

530mm x 530mm
Vision Panel

Half Door
Vision Panel

2 x Half Door
Vision Panels

Full Door
Vision Panel

RAL & BS Powder Coating Coloured Doors

We can also powder coat our doors to add the perfect finishing touch to your door.

For a full list of options and more information about our powder coating service
please visit our website





LATHAM'S

STEEL SECURITY DOORSETS

Latham's Security Doorsets Ltd

Tel: +44 (0) 1384 220 050

Fax: +44 (0) 1384 918 149

Email: sales@lathamssteeldoors.co.uk

Web: www.lathamssteeldoors.co.uk

35/37 Hainge Road,
Tividale, Oldbury,
West Midlands,
United Kingdom,
B69 2NY

