



STEEL SECURITY FIRE DOORS

| Leaf and a Half Fire Exit Door

STEEL SECURITY FIRE EXIT DOORS

Leaf and a Half Fire Exit Door

Our Leaf and Half Fire Exit Door features a security Exidor 285 adjustable panic bar set and is available 1295mm or 1395mm wide (external frame size). It's a 'door and a half' and was introduced into our fire exit door range to bridge the gap in sizes between our single and double fire exit doors.

Sizes (mm)

External Frame: 1295, 1395 x 2020

Infill Panels:

Side Panels: 30, 50, 80

Over Panels: 30, 50, 80

Acoustic Value: 27 dB

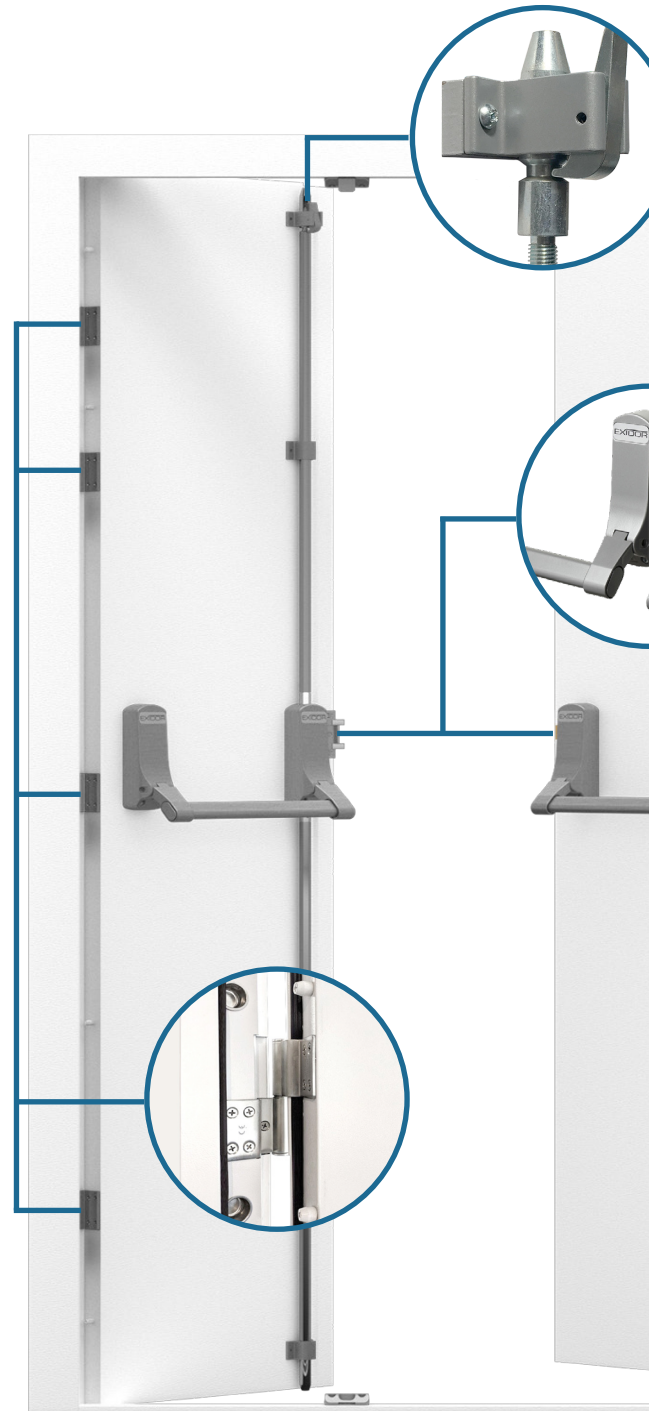
U Value: 3.62

Security Enhancing Options

Outer Access Device: Exidor 298, 302, 322
and 322 with security cylinder

Security Trim Kit: For additional door security

Drop Bar Kit: For additional door security



Features

- **Heavy duty white textured polyester powder coated finish from stock (RAL 9003)**

We also offer a powder coating service to change the colour of your door and frame

- **Fully welded construction for optimum strength**

Door Frame: 2.0mm galvanised steel

Door Leaf: Double skinned 1.0mm galvanised steel, 50mm depth

Door Leaf Core: Honeycomb core, used for its high impact properties

- **8 Stainless Steel heavy duty lift-off hinges**

8 dog bolts (fixed locking points) on hinge side of door leaf

- **Exidor Panic Hardware**

Active Door Leaf: Exidor 285 single point push bar

Passive Door Leaf: Exidor 294A 2 point push bar with adjustable shoot bolts

Exidor OADs (outer access devices) available from stock for external access

- **Weather and draught proof seals fitted as standard**

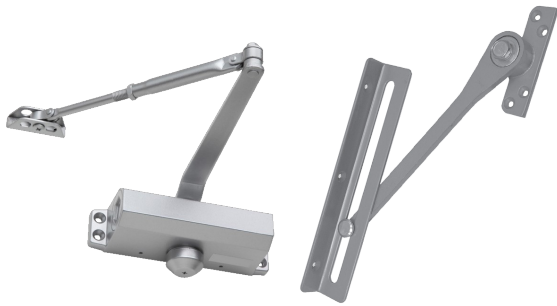
Our doors are fully weather proof and can be used externally

- **DDA compliant threshold**

Disability Discrimination Act specifies a level threshold with a maximum upstand of 15mm with chamfered edges

- **Anti jemmy bar lip integrated into the door and frame, including the hinge side with additional astragal in door jam**





Door Closer

Heavy duty door closer, manufactured to comfortably close a door weighing up to 115KGs.

Available finished in satin silver.



Push Plate

Also known as Touch Plates/Finger Plates.

Manufactured from Stainless Steel Grade #306, our pre-drilled push plates are 300mm x 75mm.

Friction Stay

Suitable for steel outward opening doors.

Face mounted stay allows door opening to be limited to around 90 degrees.



Kick Plate

Door kick plate to protect the bottom of the door. 1.2mm thick, with counter sunk screw holes, ready for fitting.

Finished in #304 Stainless steel.

OUTER ACCESS DEVICES (OAD's)

EXIDOR

Our new range of fire exit doors come fitted with Exidor hardware as standard.

Suitable for use with the Exidor 294a, 296 and 285a panic bars, OAD's offer access from the outside of the door.

Both the 200 and 300 series are certified to the European standards:

BS EN 179 – For offices, factories etc

BS EN 1125 – For areas of entertainment, public buildings etc

1. Exidor 298
2. Exidor 302
3. Exidor 322



Universal Fire Exit Door Accessories

Fire Exit Stickers

A must for our steel fire exit door set. Internal & external stickers are available for all of our fire exit doors.



Fire Exit Door D Handle & Plate

Stainless Steel, this addition removes potential strain from the key when opening the door using the rim cylinder



Internal 300(W) x 100(H)
(in mm)

External 300(W) x 150(H)
(in mm)

Louvre & Vision Panel Options



327mm x 327mm
Louvre Panel

479mm x 479mm
Louvre Panel

479mm x 1546mm
Louvre Panel

610mm x 610mm
Louvre Panel

225mm x 225mm
Vision Panel

225mm x 530mm
Vision Panel



225mm x 1543mm
Vision Panel

327mm x 327mm
Vision Panel

530mm x 530mm
Vision Panel

Half Door
Vision Panel

2 x Half Door
Vision Panels

Full Door
Vision Panel

RAL & BS Powder Coating Coloured Doors

We can also powder coat our doors to add the perfect finishing touch to your door.

For a full list of options and more information about our powder coating service please visit our website





LATHAM'S

STEEL SECURITY DOORSETS

Latham's Security Doorsets Ltd

Tel: +44 (0) 1384 220 050

Fax: +44 (0) 1384 918 149

Email: sales@lathamssteeldoors.co.uk

Web: www.lathamssteeldoors.co.uk

35/37 Hainge Road,
Tividale, Oldbury,
West Midlands,
United Kingdom,
B69 2NY

