



# STEEL SECURITY DOORS

| **Standard Duty**

# STEEL SECURITY DOORS

## Standard Duty

Our standard duty 19 point locking doorset is a higher security alternative to a wooden or PVC personnel door, even in 'standard duty' format; sharing the same 14 point locking system as it's heavy duty counterpart. Along with the 14 point locking system, 4 dog bolts and the latch, 19 points secure the door leaf in it's frame.

<b>Sizes Available</b>	845mmx2020mm 895mmx2020mm 995mmx2020mm
------------------------	---

<b>Fitting Options</b>	Side and over panels available
------------------------	--------------------------------

<b>Acoustic Value:</b>	26 dB
------------------------	-------

<b>U Value:</b>	3.46
-----------------	------

### Security Enhancing Options

<b>Level 1:</b>	Security Cylinder
-----------------	-------------------

<b>Level 2:</b>	Level 1 + Stainless Steel Handles
-----------------	-----------------------------------

<b>Level 3:</b>	Level 2 + Security Sashlock
-----------------	-----------------------------

<b>Security Trim Kit</b>	For additional external door security
--------------------------	---------------------------------------

<b>Drop Bar Kit</b>	For additional door security
---------------------	------------------------------



# Features

- **Heavy duty white textured polyester powder coated finish from stock**

Power coating service to enable you to change the colour of your door

- **Fully welded construction for optimum strength**

Door Frame: 1.2mm galvanised steel

Door Leaf: Double skinned 0.6mm galvanised steel

Door Leaf Core: Honeycomb core, used for its high impact properties

- **3 Stainless steel heavy duty lift-off hinges**

4 Dog bolts (fixed locking points) on hinge side of door leaf

- **14 point locking shoot bolt mechanism**

3 shoot bolts into the top of the frame, 8 shoot bolts into the latching side of the frame, 3 shoot bolts through the bottom threshold into the structure below. Including the 4 dog bolts and latch, 19 points secure the door leaf in the frame.

A security upgraded sashlock is also available (level 3).

- **Chrome plated steel handles included as standard (code 5586)**

Heavy duty stainless steel handles upgrade (Level 2)

available to increase security (code 6198). Level 3 security sashlock also available.

- **Weather and draught proof seals installed as standard**

Our doors are fully weather proof and can be used externally

- **DDA (Disability Discrimination Act) compliant threshold**

- **Anti jemmy bar lip all around the door leaf, including the hinge side**

- **Internal frame welded case work to protect shoot bolts from falling debris**

- **Euro profile cylinder with unique ABC key system**

Heavy duty kite marked cylinder upgrade is available, and highly recommended. The upgraded cylinder has anti-pick, anti-bump, anti-snap, anti-drill and anti-pull features.

Included in level 1, 2 & 3 security upgrades.

Thumb turn and & keyed alike options also available.



# Optional Extras



## Door Closer

Heavy duty door closer, manufactured to comfortably close a door weighing up to 115KGs.

Available finished in satin silver.



## Friction Stay

Suitable for steel outward opening doors.

Face mounted stay allows door opening to be limited to around 90 degrees.



## Extra Keys

All our doors are supplied with 3 keys as standard.

Available for all of our door types, and security upgraded locks.

Price stated is per key.



## Door Viewer

A simple, quick and easy job to install to any of our doorsets, and only takes a matter of minutes.

Viewers are available in chrome and satin chrome finishes.



## Door Knocker

A classical shaped urn door knocker that is timeless in appearance. Suitable for modern and traditional front doors.

Available in chrome and satin chrome finishes.



## Letterplate

The all in one letterbox solution for your front door. A telescoping sleeve accommodates a variety of door types.

Available in chrome and satin chrome finishes.

# Handle Options



**Hooply 2066T**



**Hooply 2166X**



**Hooply 6101**



**Hooply 2066X**



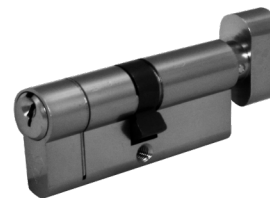
**Hooply 2018T**



**Code Lock**

# Cylinder Configurations

Our personnel doors all come pre-fitted with euro cylinders. You can choose to have them keyed alike (same key to open all doors) or a thumb turn cylinder to lock the door internally without a key.



# Louvre & Vision Panel Options



327mm x 327mm  
Louvre Panel

479mm x 479mm  
Louvre Panel

479mm x 1546mm  
Louvre Panel

610mm x 610mm  
Louvre Panel

225mm x 225mm  
Vision Panel

225mm x 530mm  
Vision Panel



225mm x 1543mm  
Vision Panel

327mm x 327mm  
Vision Panel

530mm x 530mm  
Vision Panel

Half Door  
Vision Panel

2 x Half Door  
Vision Panels

Full Door  
Vision Panel

## RAL & BS Powder Coating Coloured Doors

We can also powder coat our doors to add the perfect finishing touch to your door.

For a full list of options and more information about our powder coating service please visit our website





# LATHAM'S

STEEL SECURITY DOORSETS

## Latham's Security Doorsets Ltd

**Tel:** +44 (0) 1384 220 050

**Fax:** +44 (0) 1384 918 149

**Email:** [sales@ajsteeldoors.co.uk](mailto:sales@ajsteeldoors.co.uk)

**Web:** [www.ajsteeldoors.co.uk](http://www.ajsteeldoors.co.uk)

35/37 Hainge Road,  
Tividale, Oldbury,  
West Midlands,  
United Kingdom,  
B69 2NY

